

West Burton Solar Project

Consultation Report Appendix 5.7: Phase Two Community Consultation Materials (Part 3 of 3)

Prepared by: Counter Context
March 2023

PINS reference: EN010132
Document reference: APP/WB5.7
APFP Regulation 5(2)(q)



Contents

<u>4</u>	<u>PHASE TWO INFORMATION DISPLAY BOARDS</u>	<u>3</u>
<u>5</u>	<u>IMAGE OF PROPOSED PERMISSIVE PATH AT WEST BURTON 2</u>	<u>21</u>
<u>6</u>	<u>SITE LAYOUTS FOR THE SCHEME</u>	<u>23</u>
<u>7</u>	<u>IMAGES OF DIGITAL ENGAGEMENT PLATFORM</u>	<u>25</u>
<u>8</u>	<u>POSTERS PUBLICISING THE CONSULTATION OPPORTUNITIES</u>	<u>29</u>
<u>9</u>	<u>PRESS RELEASE AND PUBLICATIONS ISSUED TO REGIONAL AND TRADE MEDIA</u>	<u>31</u>
<u>10</u>	<u>PHASE TWO CONSULTATION SUMMARY REPORT</u>	<u>36</u>

4 Phase Two Information Display Boards

Welcome to our information event

Have a look round and see our updated proposals for the Cottam Solar Project and West Burton Solar Project. We are here today to share with you our detailed proposals for each project and hear your feedback.

We welcome your views and comments to help us to finalise our proposals before we submit our application later this year.

In November 2021 we held our phase one consultation where we introduced the projects and asked for feedback on our early stage proposals.

Since the end of our phase one consultation, we have considered the feedback you gave us and have been using it to develop our proposals further.

For our phase two consultation, we are now presenting you with our detailed design proposals for the projects. This includes the results of our environmental assessments, our site layouts and our plans for environmental mitigation measures. We have also been working with local community groups to explore opportunities for delivering direct local benefits.

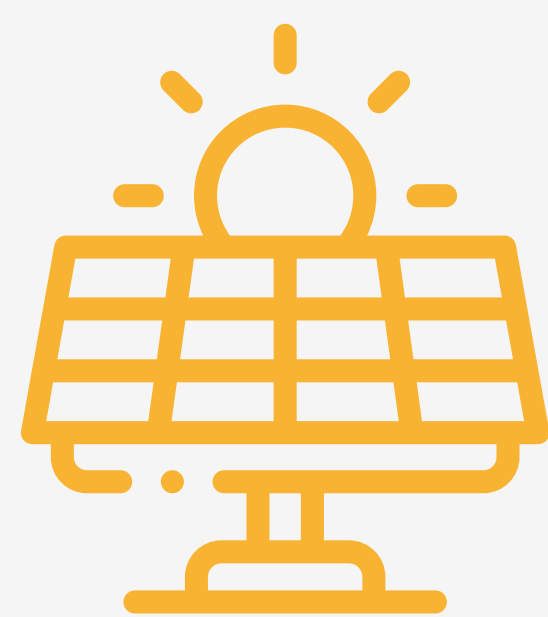


Who is Island Green Power?

Island Green Power is an international developer of renewable energy projects.

Established in 2013, Island Green Power (IGP) has delivered 26 solar projects worldwide totalling more than 1GW of capacity. This includes 14 solar projects in the UK and Republic of Ireland.

IGP's mission is to increase solar energy usage, making more renewable energy possible and saving thousands of tonnes of CO₂ in the process. Cottam Solar Project Limited and West Burton Solar Project Limited will be 'the Applicant' and developers of the projects and are part of Island Green Power Limited.



26 solar projects worldwide



Totalling over 1GW of capacity

Island
GREEN
POWER

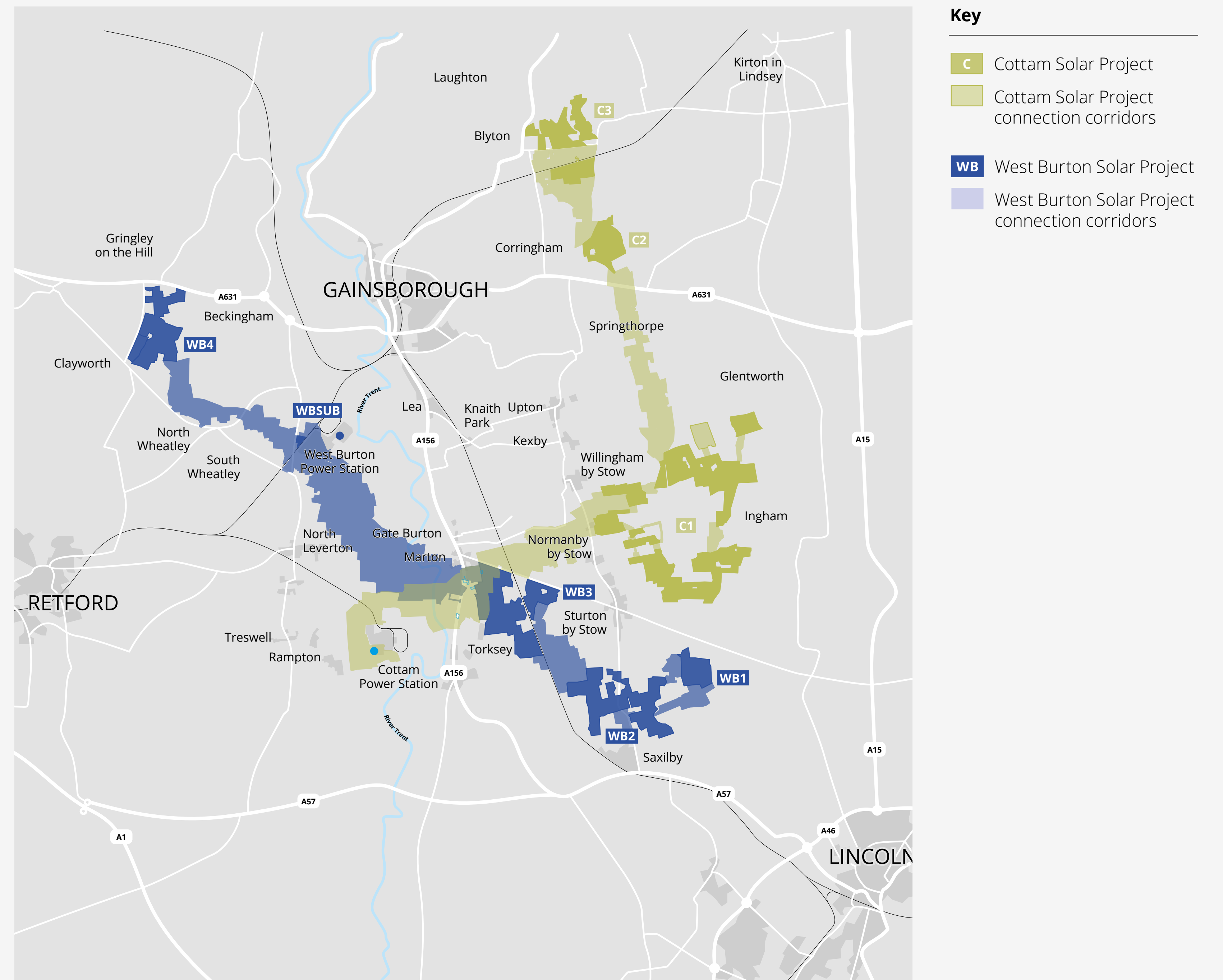


About the projects

Both projects are named after their grid connection points at the existing National Grid substations at the Cottam Power Station and West Burton Power Station. Each project involves a series of areas of land which would host ground-mounted solar panels and be connected by underground cables.

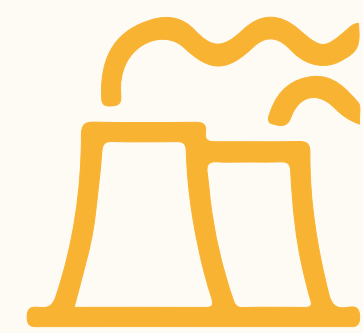
Cottam Solar Project would generate around 600 MW of renewable energy and West Burton Solar Project would generate around 480 MW of renewable energy, both with the facility to store some of this energy for when it is needed most.

Because of the amount of renewable energy each project would generate, they will each be classified as a separate Nationally Significant Infrastructure Project (NSIP). This means that, to gain permission to build both projects, we will be submitting two Development Consent Order (DCO) applications, one for each project, to the Planning Inspectorate (PINS).



The opportunity

The decommissioning of Cottam and West Burton Power Stations presents the opportunity to repower the region with clean, green energy.



The Cottam Solar Project could replace around 30% of the former generation capacity of the coal powered Cottam Power Station and generate enough clean energy to power 180,000 homes



The West Burton Solar project could replace around 24% of the generation capacity of the coal powered West Burton Power Station and generate enough clean energy to power 144,000 homes



Supporting regional and national targets for reducing carbon emissions to net zero by 2050



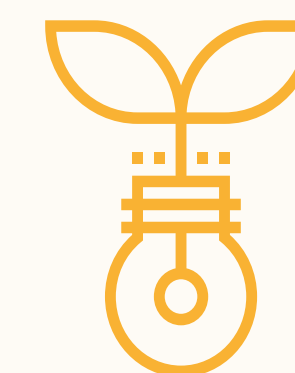
Improving energy resilience by diversifying energy production and storing energy for when it is needed most



Contributing towards strategic improvements to local ecology and biodiversity



Delivering affordable energy, as the electricity generated from solar is already cheaper than electricity generated from fossil fuels and the project would be subsidy free without taxpayer funding



Facilitating or directly delivering other potential local needs or initiatives, which could be suggested by you through our consultation

Cottam Solar Project

The Cottam Solar Project is named after its grid connection point at the existing National Grid substation at the Cottam Power Station.

The proposals involve three sites:

- Cottam 1 is located in the area around Coates;
- Cottam 2 is located east of the village of Corringham; and
- Cottam 3 is located to the northeast and south-east of the village of Blyton and east of Pilham.

These sites would host ground-mounted solar panels and be connected by underground cable. Energy storage infrastructure is proposed to be included within the Cottam 1 site.

The project would generate around 600 MW of renewable energy, as well as having the capacity to store this energy for when it is needed most.



Key



Area for solar panels and associated development



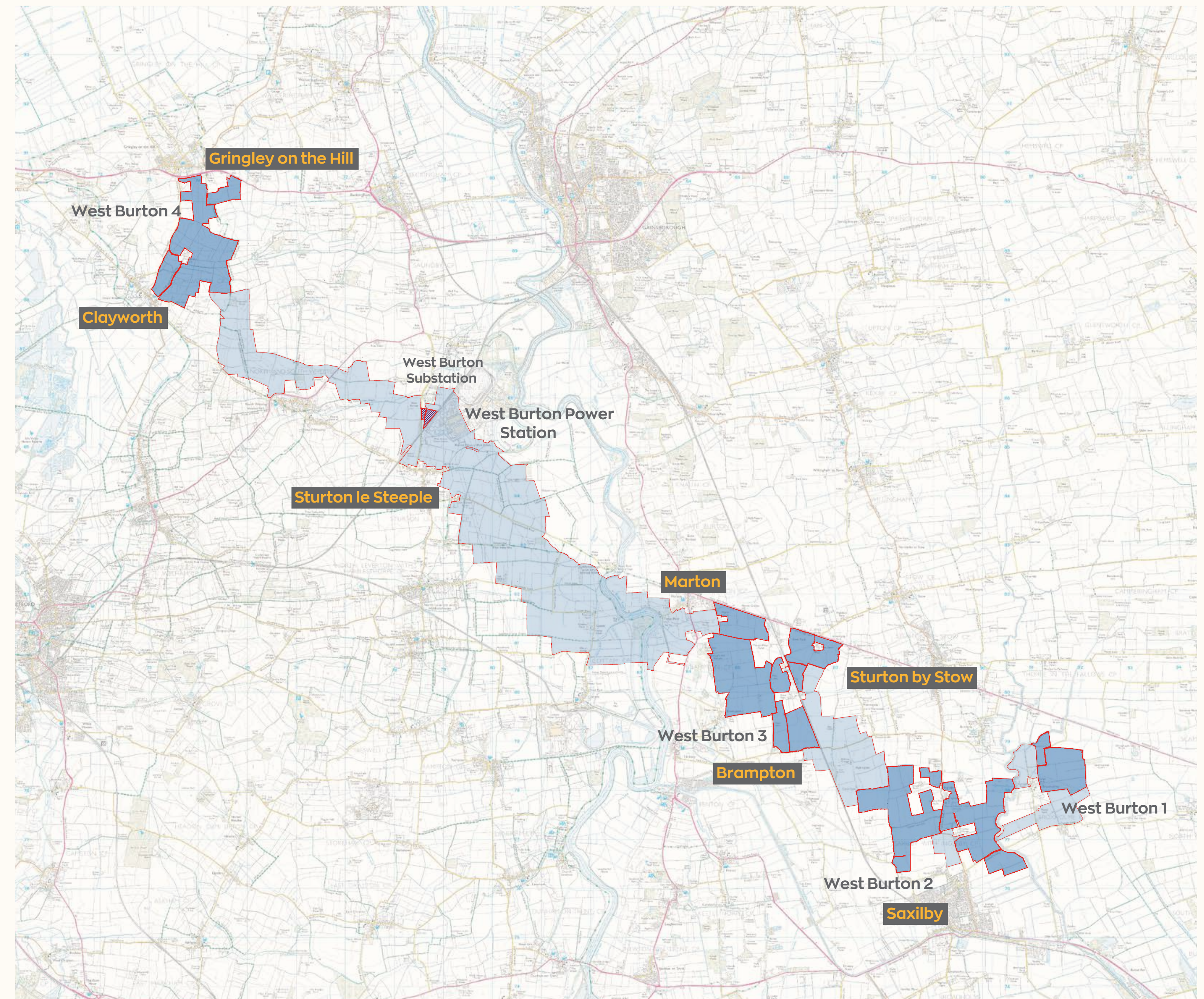
Cable Route Search Corridor

West Burton Solar Project

The West Burton Solar Project is named after its grid connection point at the existing National Grid substation at the West Burton Power Station.

The proposals involve five sites:

- West Burton 1, 2 and 3 are located east of the River Trent, south of the A1500 and north of Saxilby, in the district of West Lindsey, Lincolnshire.
- West Burton 4 is located between the villages of Clayworth and Gringley on the Hill, in the district of Bassetlaw, Nottinghamshire.
- These sites would host ground-mounted solar panels and be connected by an underground cable.
- There will also be a smaller fifth site, West Burton Substation, which will include energy storage infrastructure and the main 400kV substation. This is located to the northwest of West Burton Power Station.



Key



Area for solar panels and associated development



Cable Route Search Corridor



Area for energy storage and associated development

The project would generate around 480 MW of renewable energy, and have the facility to store energy for when it is needed most.

Project updates

Following our phase one consultation last year, we have been developing our proposals by considering feedback alongside environmental assessments and technical work that we are undertaking.

This has informed the more detailed design presented for our phase two consultation.

When designing our sites we have:

- Removed some areas of better quality agricultural land from the development area;
- Introduced a buffer between some residential properties and the panels and propose that certain fields have no panels at all due to landscape and visual considerations;
- Designed the West Burton 2 site so that there are no panels in the eastern part after detailed assessment concluded that flooding would be too deep for panels to be suitable;
- Taken into account potential archaeology on the site;
- Proposed access points that use existing field entrances and avoid large impacts on the local road network;
- Ensured offsets from sensitive ecology such as badger setts, watercourses, ditches and trees with bat roost potential.

Cable Routes

We have also been working to refine our cable route corridors to manage potential impacts to the surrounding environment.

This includes looking for opportunities to combine cable routes, where possible, across both the Cottam and West Burton projects, but also with the separate Gate Burton Energy Park project being proposed by Low Carbon. The main area of refinement has taken place around the crossing of the River Trent, with a preferred location identified to the southwest of Marton.

The more focussed search areas have also been informed by landowner consultation, assessments of environmental constraints and other planning applications, and avoiding residential or business properties.

Preliminary Environmental Information Reports (PEIR)

As part of our phase two consultation, we are now presenting the findings of the environmental studies undertaken to date in our Preliminary Environmental Information Report (PEIR). We are asking for feedback on this environmental information and the planned environmental mitigation measures to help shape our final design for the projects.

A PEIR has been produced for the Cottam Solar Project and the West Burton Solar Project.

Each PEIR is made up of three parts:

- 1** Volume 1: Report - The main report introduces and explains the solar project, including how the design has evolved and the policy context within which it is being developed (Chapters 1-6). The report includes technical chapters on key topics, setting out the reporting and assessment of our preliminary environmental studies to date (chapters 7-20). This includes topics such as Landscape and Visual Impact, Ecology and Biodiversity, and Traffic and Access.
 - 2** Volume 2: Appendices - Appendices are provided to present information in support of the Volume 1 Report. This includes detailed site plans and layouts for each of the site areas, outline management plans for landscape and ecology, construction and traffic, and survey methodology and results.
 - NTS** Non-Technical Summary - The PEIR also includes a summary to provide a more concise overview of the Volume 1 Report in non-technical language. The Non-Technical Summary provides an overview of the preliminary assessments undertaken for each of the topics in the report. The document also provides an overarching summary of the anticipated environmental effects of the project identified at this stage.
-

Construction traffic management

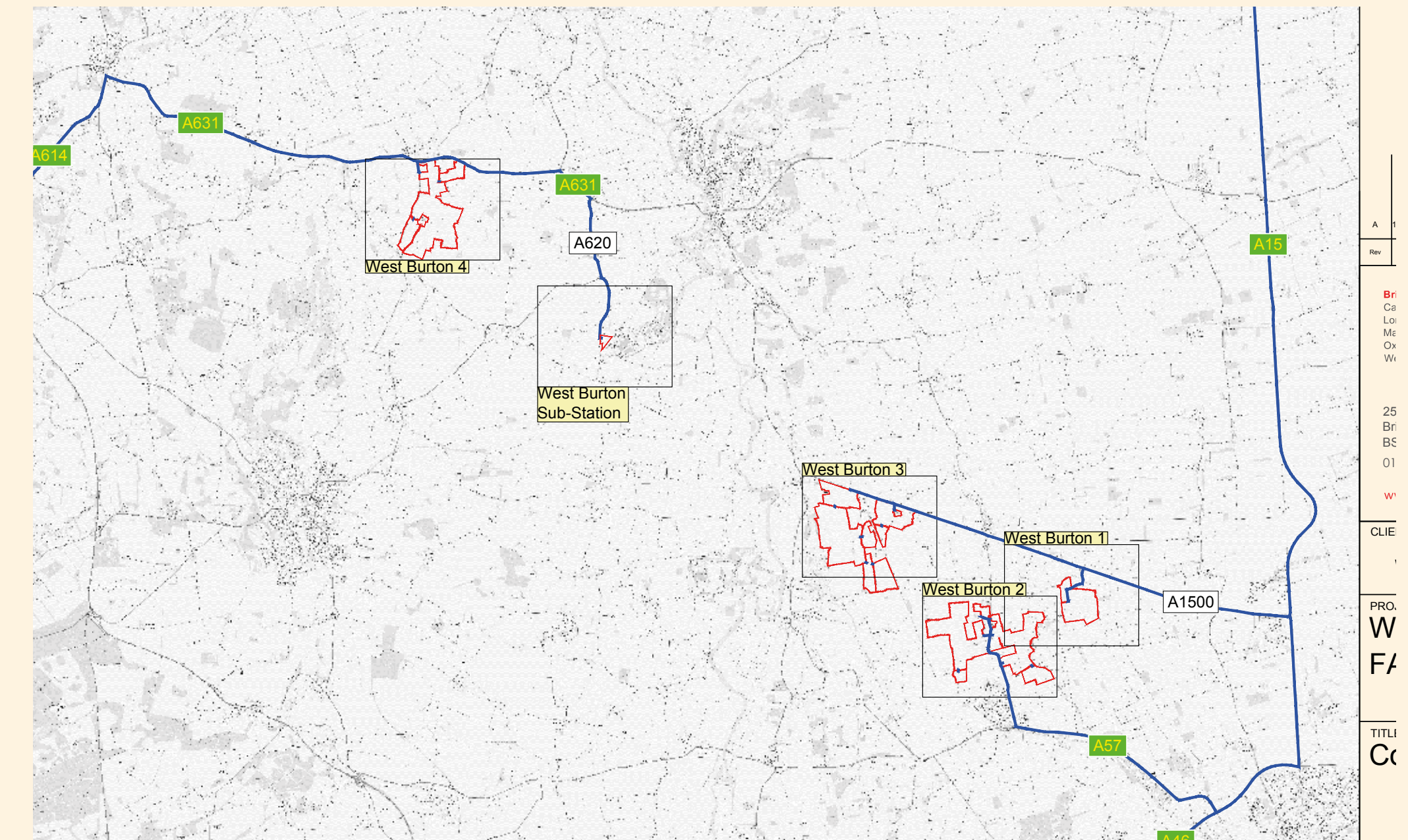
Our PEIR sets out outline management measures which indicate the standards and procedures for managing the impact of traffic during the construction period.

This includes localised road improvements where necessary to minimise any traffic disruption for the local community, and procedures to manage and control traffic levels.

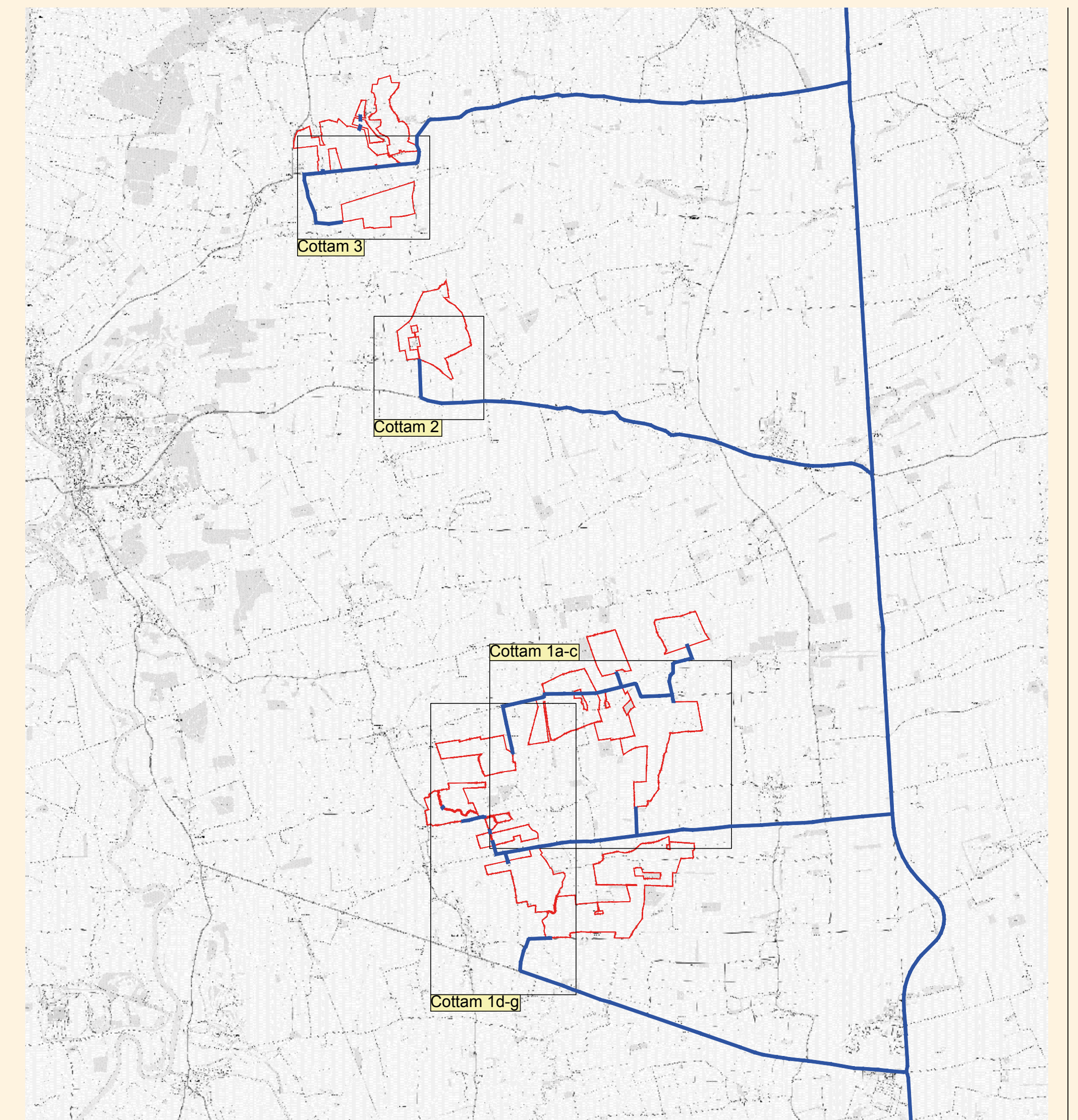
Some of the proposals we have made to manage construction traffic are:

- Temporary road signing will be implemented along the designated route to inform other traffic of the ongoing construction works and to direct construction traffic to and from the sites;
- Where possible, construction deliveries will be coordinated to avoid construction vehicle movements during peak hours;
- Vehicles carrying material off-site will be sheeted to prevent the spread of Dust;
- Avoiding using routes through villages where possible.

West Burton Solar Project Construction Traffic Routes (Figure 3.1 from Outline Construction Traffic Management Plan (Appendix to Chapter 14))



Cottam Solar Project Construction Traffic Routes (Figure 3.1 from Outline Construction Traffic Management Plan (Appendix to Chapter 14))



Environmental mitigation measures

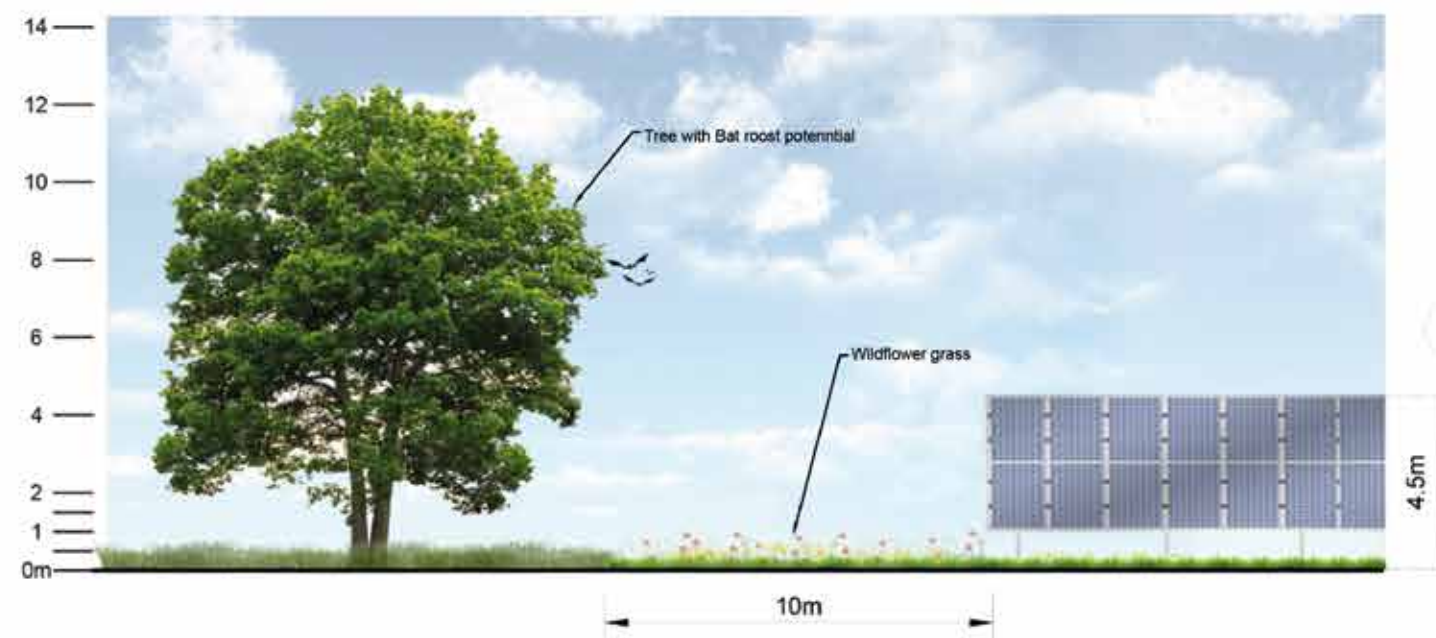
The PEIR sets out any anticipated environmental impacts that have been identified to date and where appropriate, how we are proposing to mitigate these.

Our proposed environmental mitigation measures include:

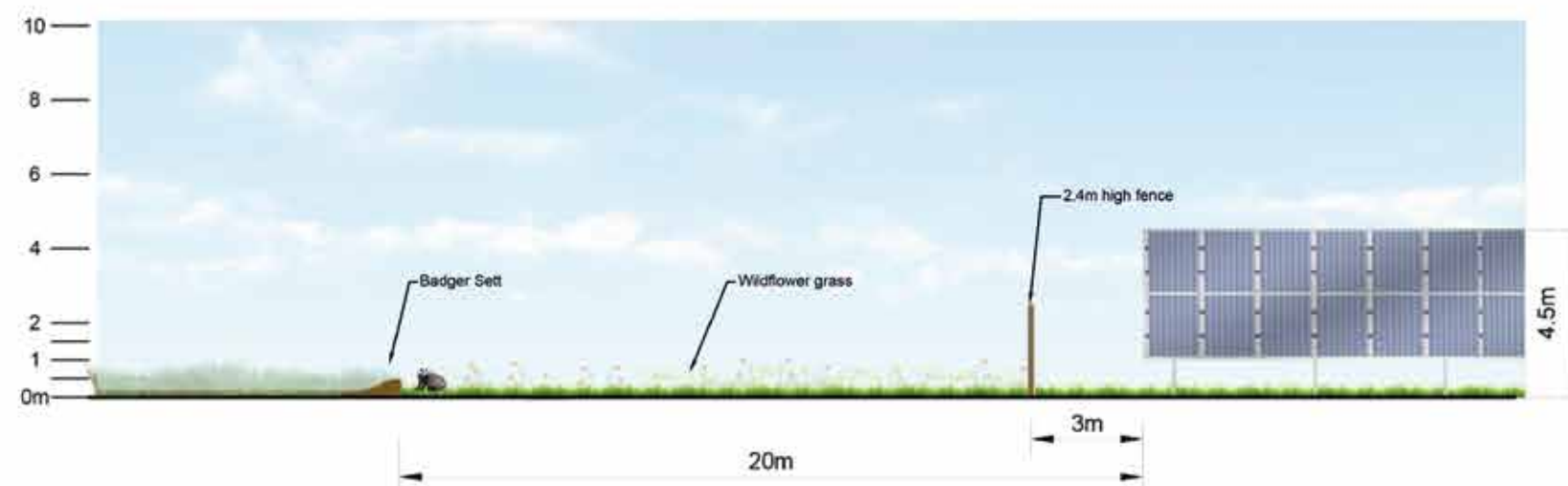
- Retaining and managing the existing vegetation along the boundary of the sites, where practicable. As well as reducing potential impacts to existing planting and wildlife, this will also help to screen lower-level views of the solar arrays.
 - Planting new hedgerows and tree lines to contribute to enhancing linear habitats and further screening the sites.
 - Producing a landscape and ecological management plan. This will set out a strategy to manage the habitats created over the lifetime of the project.
 - Using existing field entrances and gaps in hedgerows (or other linear habitats) where possible when planning for construction vehicles to access the site areas, and avoiding large impacts on the local road network.
 - Seeking to avoid using best and most versatile agricultural land for installing solar panels.
 - Introducing buffers between some residential properties and the panels and proposing that certain fields have no panels at all due to landscape and visual considerations.
 - Avoiding areas of surface water flooding (where identified as being greater than 1m in depth) for the siting of solar arrays.
 - Taking into account potential archaeology on the site.
 - Ensuring there are offsets between solar panels and sensitive ecology such as badger setts, watercourses, ditches and trees with bat roost potential.
 - Implementing best practice measures during construction to minimise potential noise, dust and vibration from the sites.
-

Indicative examples of screening and ecological buffers

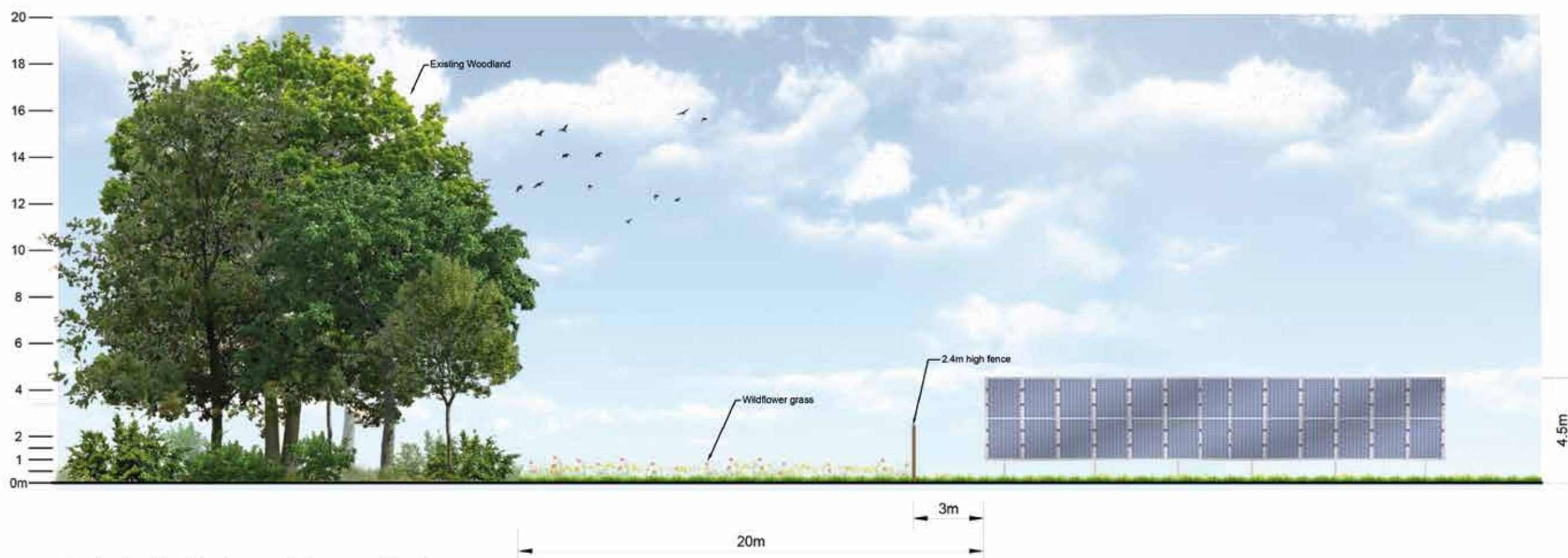
Indicative Cross Sections of Maximum 4.5 m high panel (1:200)



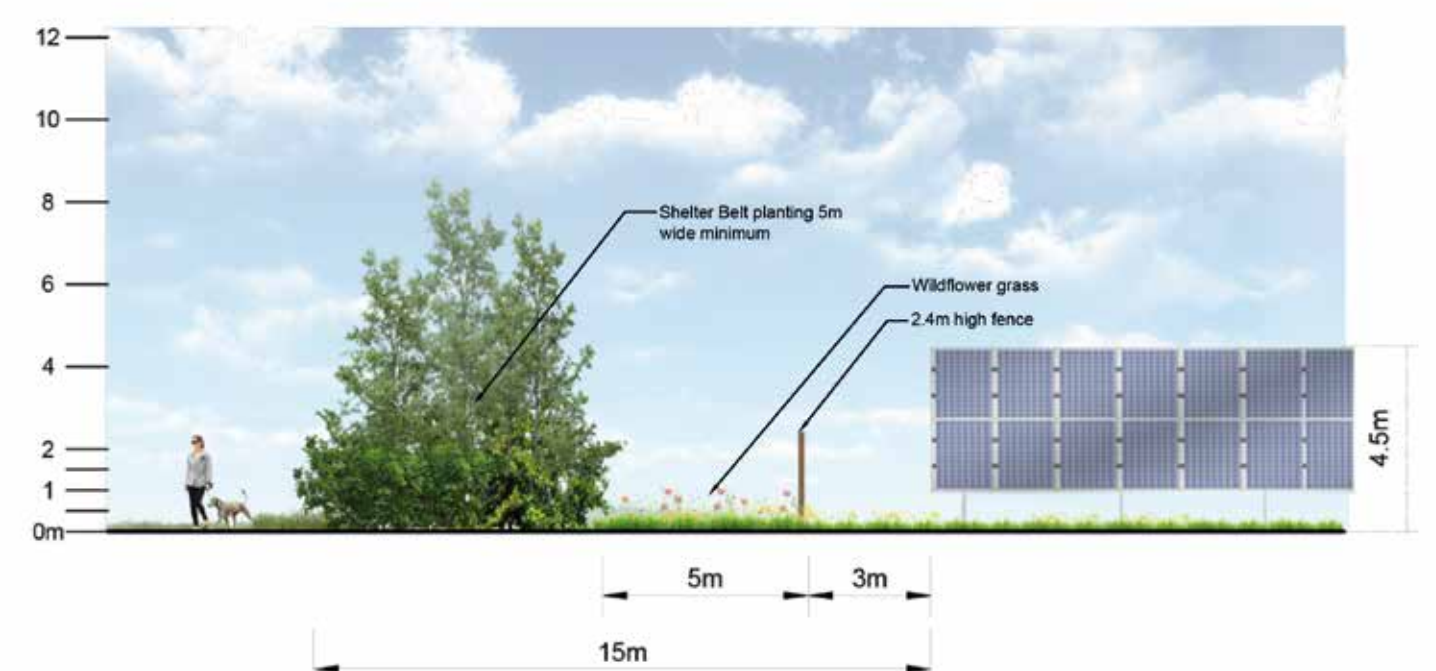
Ecological buffer from Trees with moderate Bat roost potential (Up to 12m for high Bat roost potential)



Ecological buffer from Badger setts

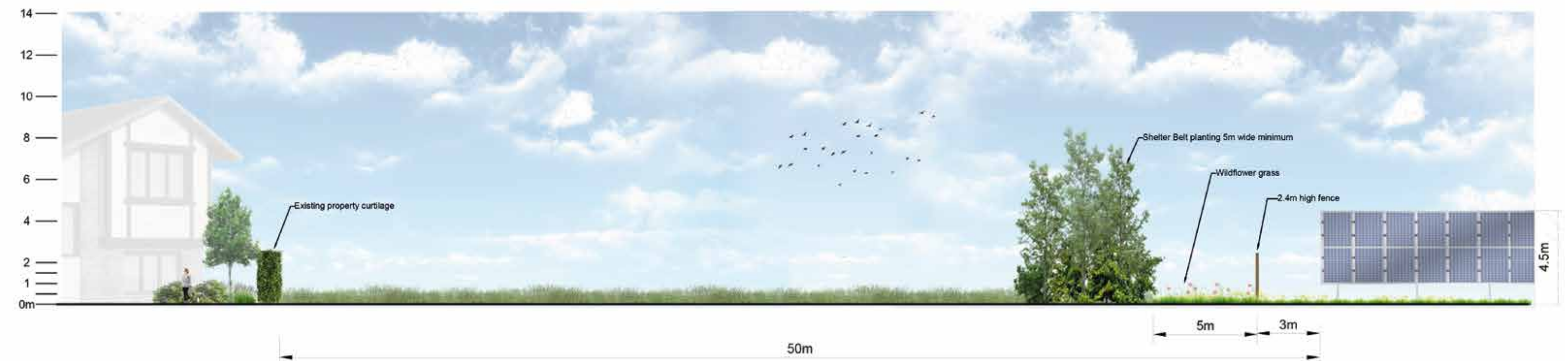


Ecological buffer from existing woodland

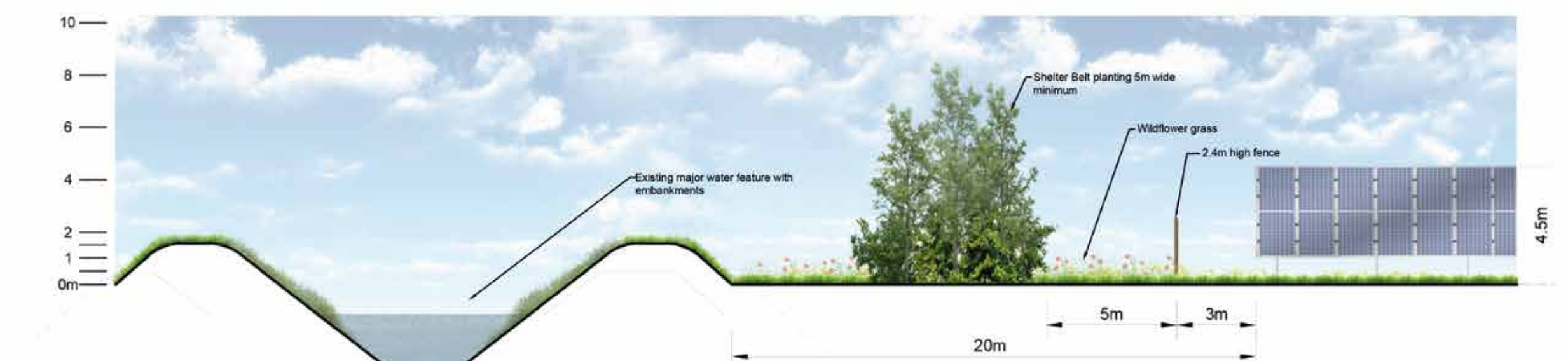


Public Right of Way

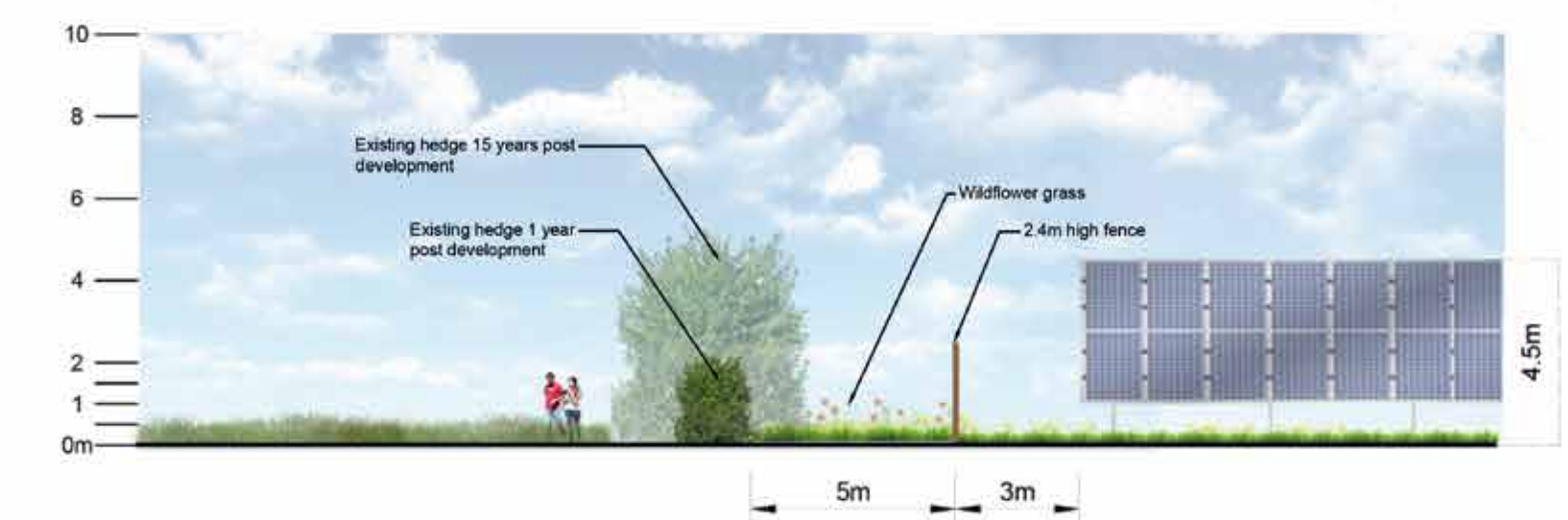
Indicative Cross Sections of Maximum 4.5 m high panel (1:200)



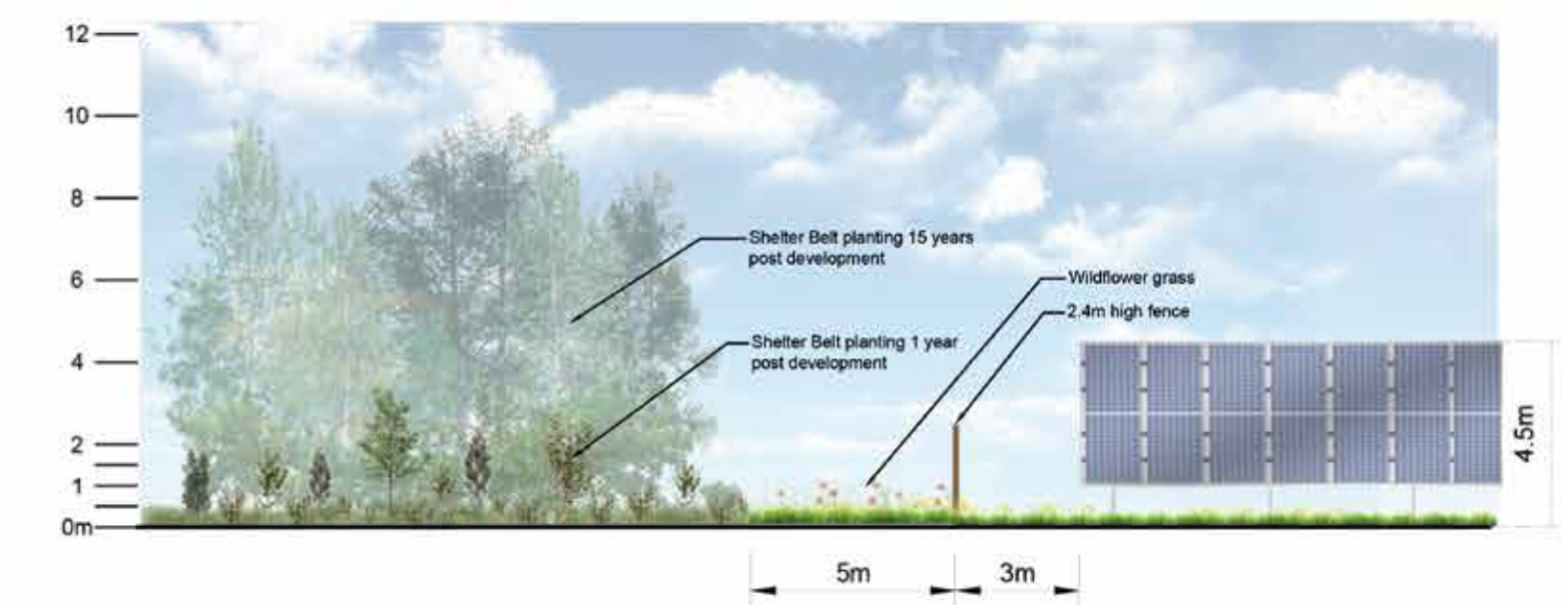
Minimum offset from residential property



Ecological buffer from major watercourse



Existing hedge as existing and 15 years post development



Shelterbelt vegetation in years 1 & 15

Community benefits

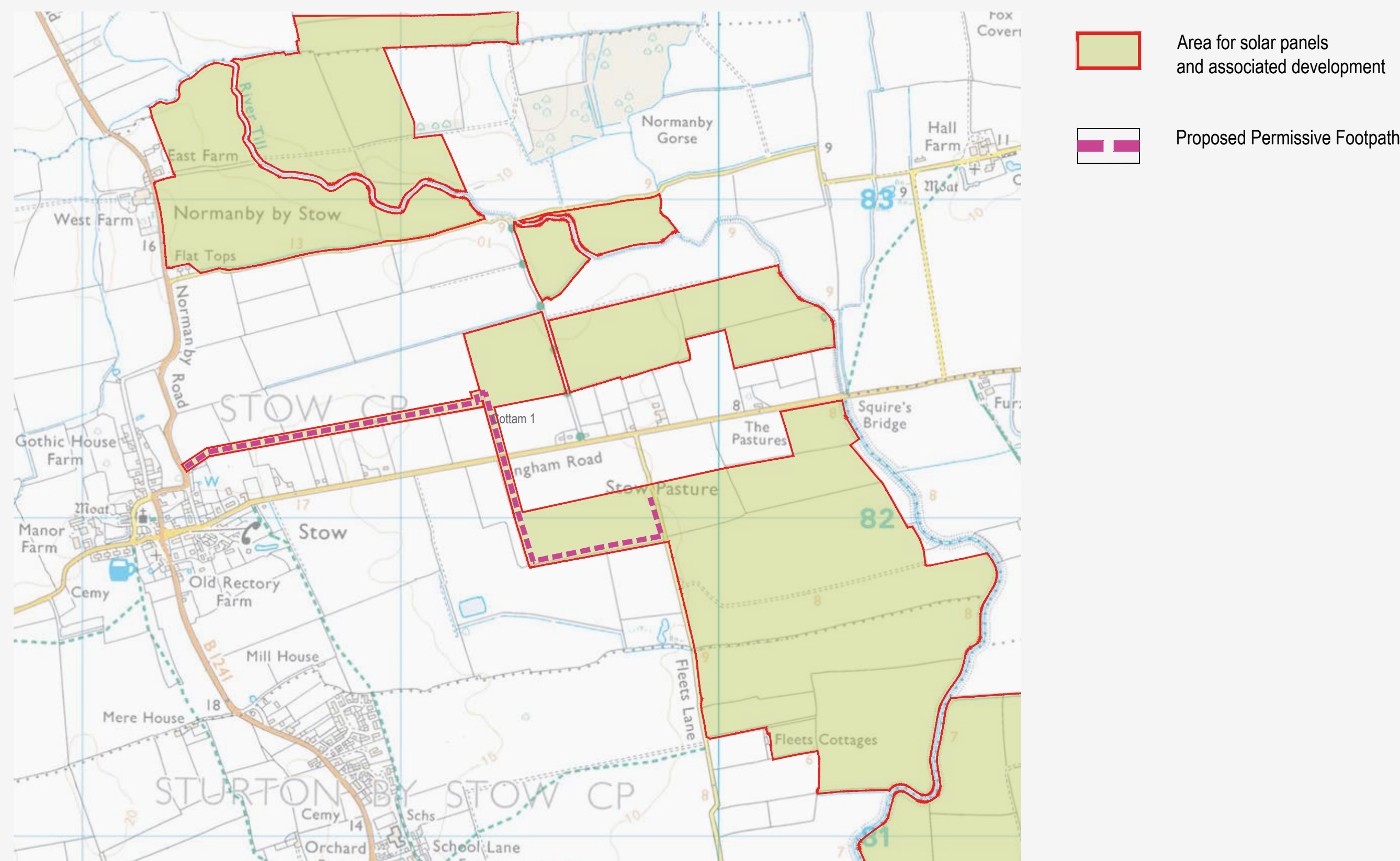
At phase one you gave us your suggestions of the types of community benefits you would like to see as part of the projects. We would like to again thank you for these suggestions.

We have also been working with the Nottinghamshire and Lincolnshire Community foundations, following your phase one feedback, to explore the creation of a community fund to award funding to the sorts of local community projects and groups you've told us matter most.

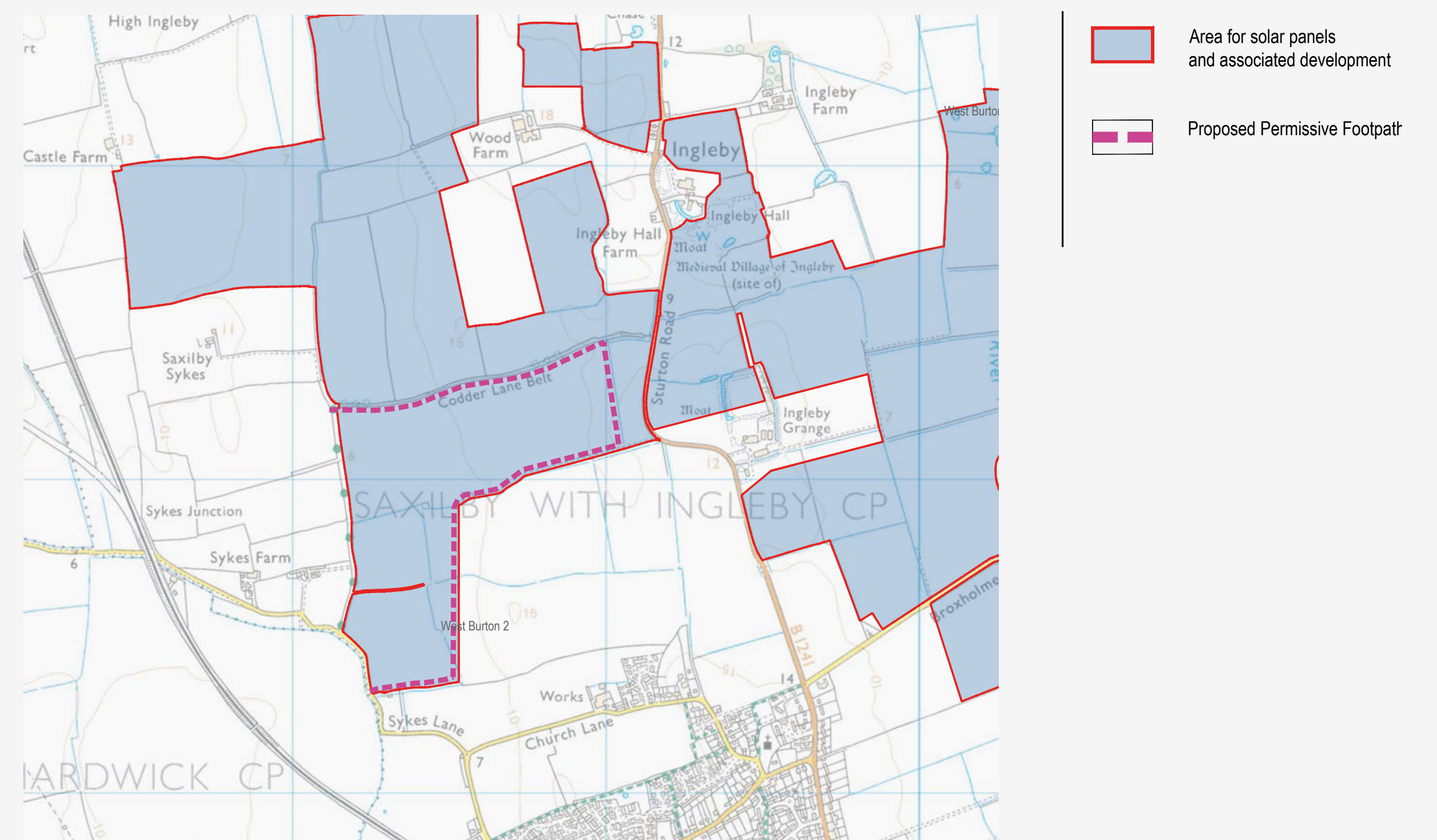
Opportunity for permissive paths

We have been exploring suggestions received to extend local foot and cycle path networks. This includes permissive paths that connect the sites to the wider area, providing improved recreational access for local communities. Two proposals for this are presented for our phase two consultation:

The paths are proposed around Cottam 1 and West Burton 2 as these areas were identified by local groups as areas that would benefit from new permissive paths. The landowners in these areas were also willing to accommodate this.



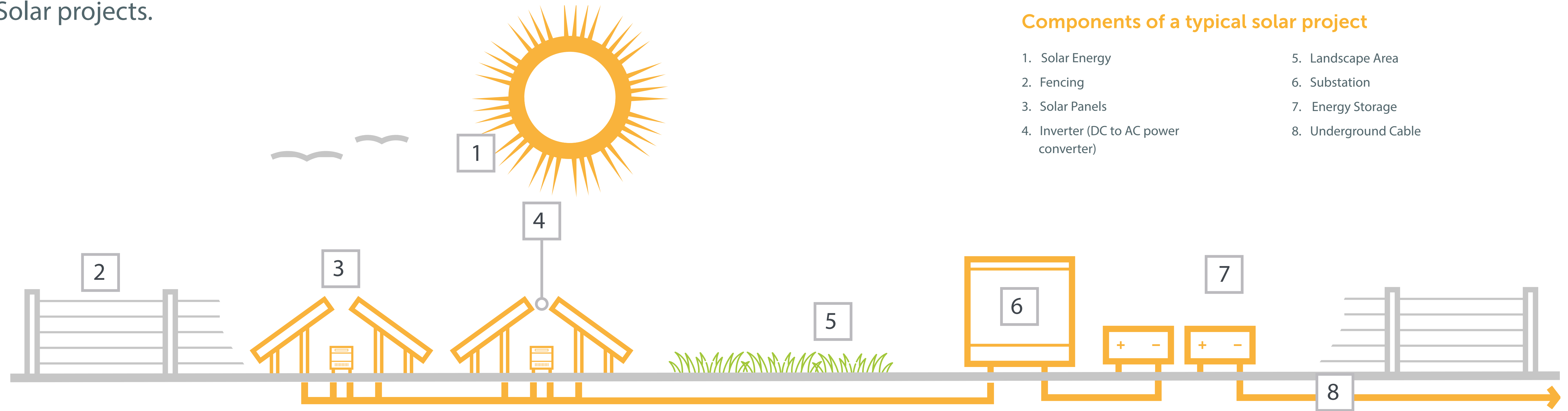
Proposed permissive path at Cottam 1.



Proposed permissive path at West Burton 2.

The infrastructure

The following images are examples of the infrastructure that will be present in the Cottam and West Burton Solar projects.



The infrastructure

Image of typical (large 400kV) power transformer



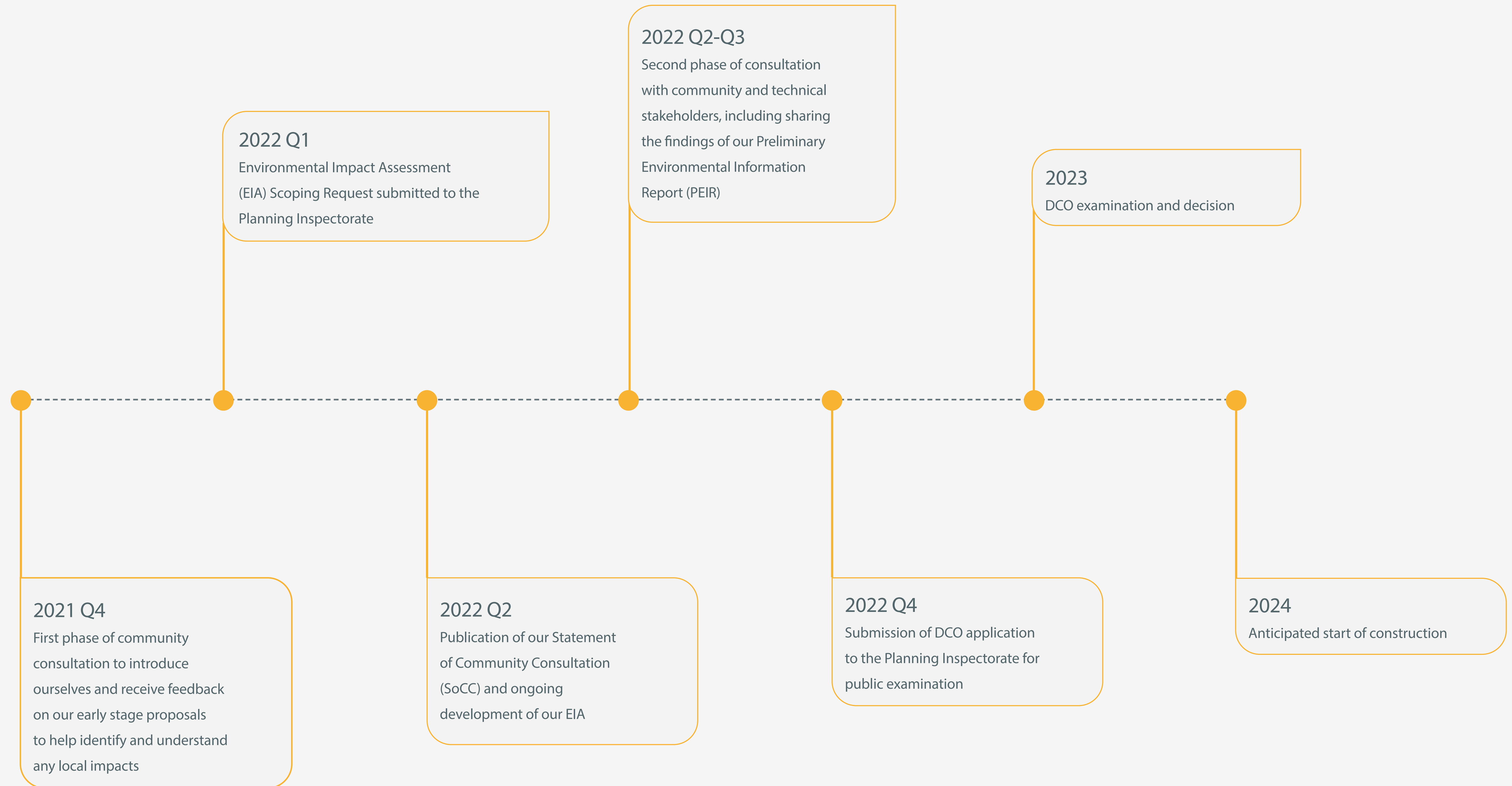
Image of typical 132kV substation compound



Image of typical energy storage units



Project timeline



Other solar projects

We are aware that there are a number of other solar projects in the planning process.

In particular, we recognise the proximity of the proposed Gate Burton Energy Park to the Cottam and West Burton Solar Projects. Proposals for the Gate Burton Energy Park are being developed by the company Low Carbon. Gate Burton is a separate development, not connected to Island Green Power's Cottam or West Burton projects

We are however, committed to working collaboratively with Low Carbon to make sure that residents are informed about each of the different solar proposals in the area. We are also seeking to combine our cable route with Low Carbon, where we can, to ensure as little disruption to the local community as possible.

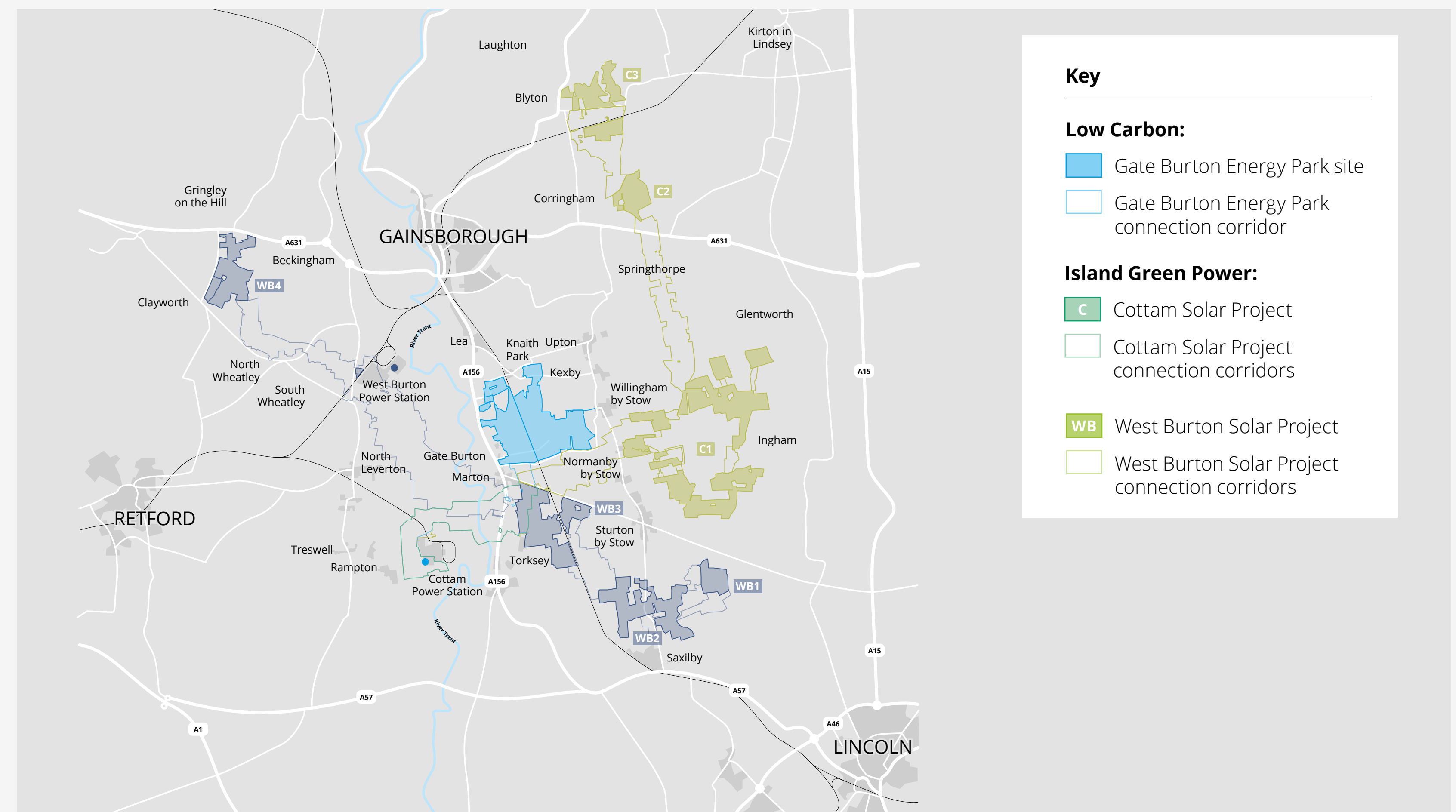
Low Carbon will also be holding its own consultation on its proposals for Gate Burton Energy Park proposals through June and July. You can find out more about Low Carbon's separate Gate Burton project, including how to respond to their consultation by:

Visiting: [REDACTED]

Calling: 0800 860 6259

Emailing: info@gateburtonenergypark.co.uk

Writing to: FREEPOST GATE BURTON ENERGY PARK



Have your say

We encourage you to provide your feedback on our updated proposals for the Cottam and West Burton Solar projects. Your feedback has helped to shape the proposals and will continue to help us to finalise our proposals as we get ready to submit our application later this year.

You can have your say by filling out our feedback form here at the event, alternatively you can take them home and post them to us for free at: FREEPOST CAWB Solar Projects.

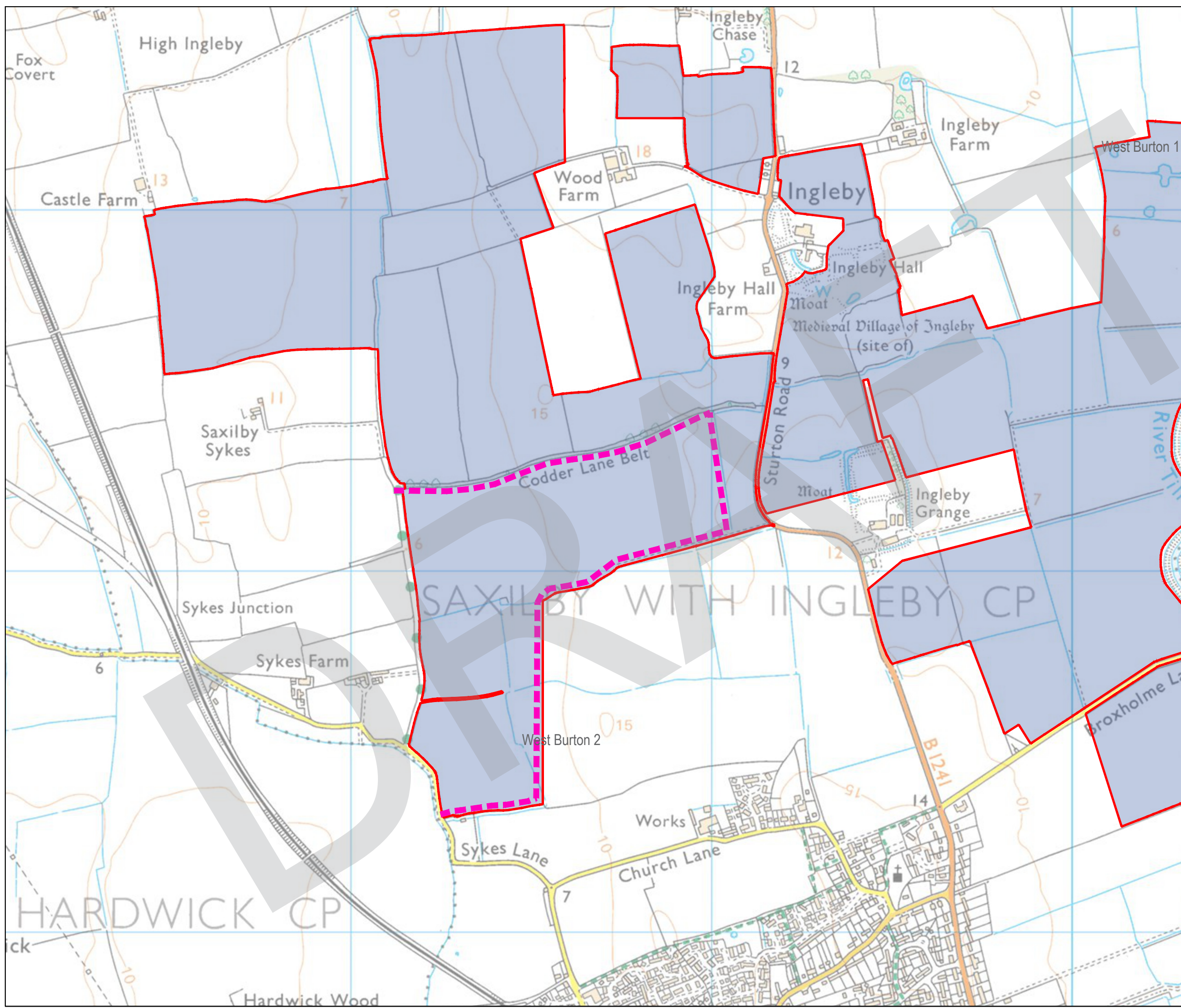
We are particularly interested in your comments on:

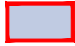

- Further refining the detailed design proposals for the projects, such as the final cable routes and site layouts
- The proposed mitigation measures to minimise impacts on local communities and the environment (and whether you think they go far enough)
- The environmental enhancement measures and community benefit opportunities proposed

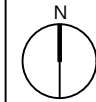
You can also provide your feedback and view all of our materials through our project websites, at either:



5 Image of Proposed Permissive Path at West Burton 2



- Key**
-  Area for solar panels and associated development
 -  Proposed Permissive Footpath



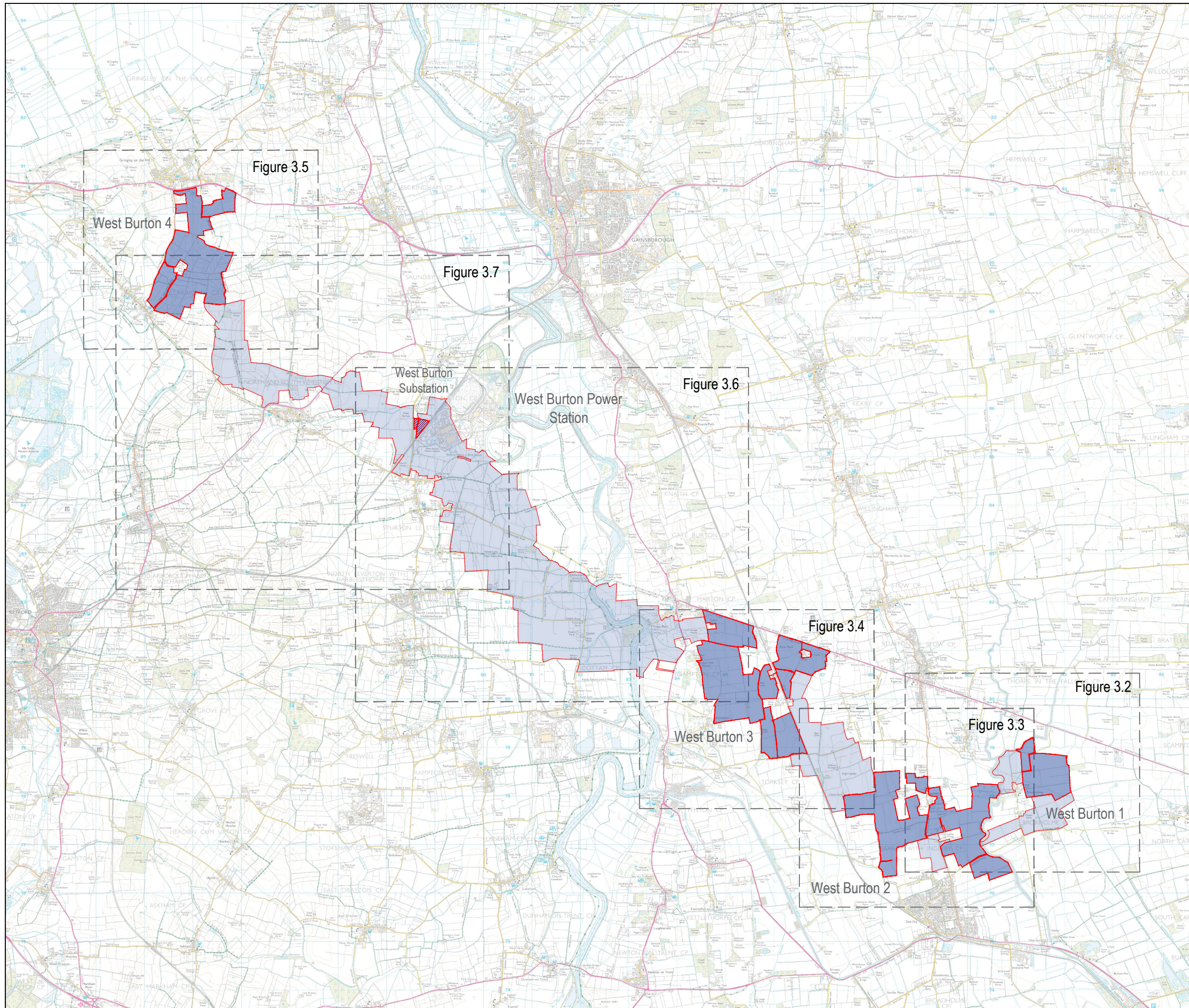
1:10,000 @ A3




Drawn by: BJ	REF:2981-DR-PL-WB-SK01
Checked by: WW	Date: 25/05/2022

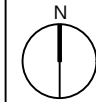
Proposed Permissive Footpath
West Burton 2

WEST BURTON SOLAR PROJECT
PEIR

6 Site Layouts for The Scheme



- Key**
-  Area for solar panels and associated development
 -  Cable Route Search Corridor
 -  Potential area for energy storage and associated development



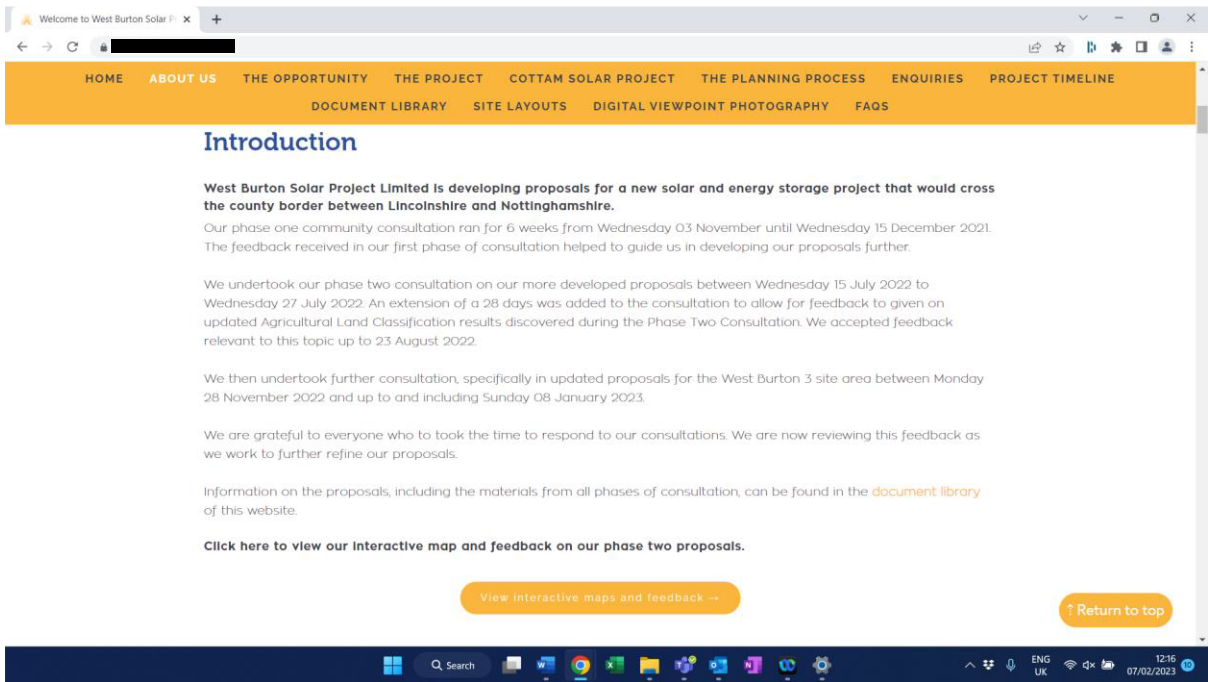
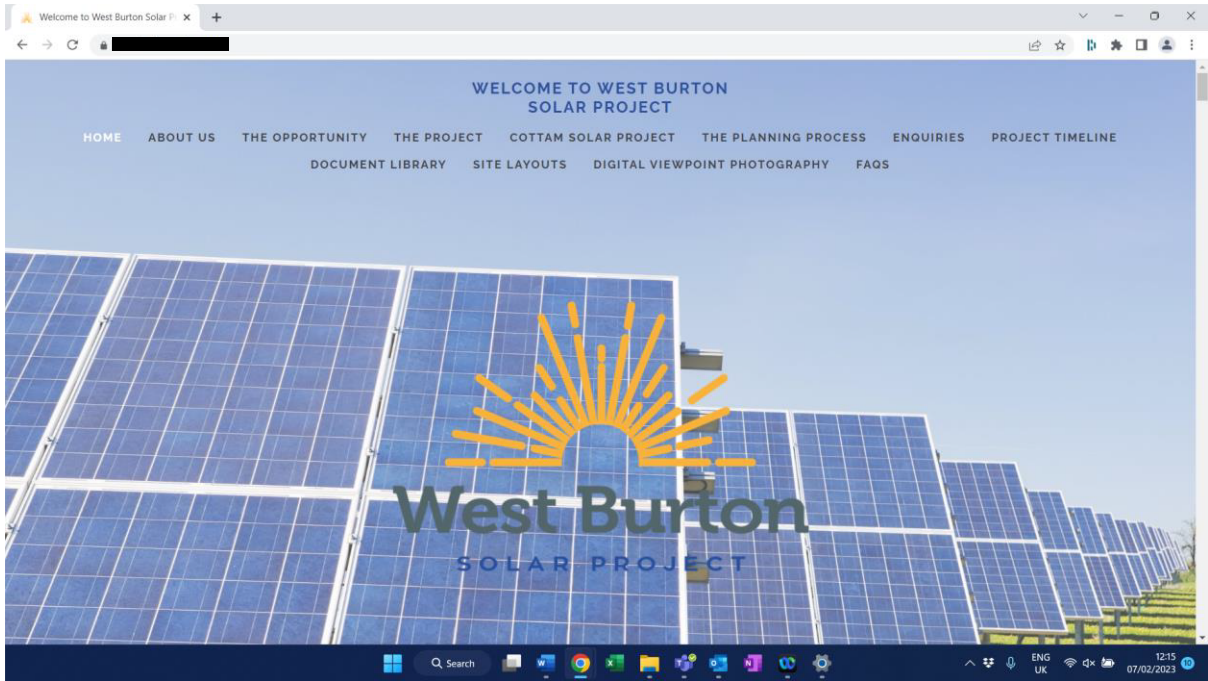
1:75,000 @ A3

Drawn by: LH	REF:2981-REP-PL-WB-3.1
Checked by: JC	Date: 25/05/2022

Figure 3.1
Site Plan

WEST BURTON SOLAR PROJECT
PEIR

7 Images of Digital Engagement Platform



Welcome to West Burton Solar P x

HOME ABOUT US THE OPPORTUNITY THE PROJECT COTTAM SOLAR PROJECT THE PLANNING PROCESS ENQUIRIES PROJECT TIMELINE

DOCUMENT LIBRARY SITE LAYOUTS DIGITAL VIEWPOINT PHOTOGRAPHY FAQs

Enquiries

Our phase one consultation ran for 6 weeks from Wednesday 03 November until Wednesday 15 December 2021. We have used feedback we received in our first phase of consultation to help guide us and develop our proposals further.

We undertook our phase two consultation on our more developed proposals between Wednesday 15 June 2022 to Wednesday 27 July 2022. We are grateful to everyone who took the time to respond to our consultation. We are now reviewing this feedback as we work to further refine our proposals.

We held a series of six information events as part of our phase two consultation. The dates of these events can be found below:

Event	Date	Time
Clayworth Memorial Hall, Town St, Clayworth, Retford DN22 9AD	Wednesday 22 nd June	2 pm-6 pm
Saxilby Village Hall, 34 High St, Saxilby, Lincoln LN1 2HA	Thursday 23 rd June	3:30 pm-7:30 pm
Blyton Memorial Hall, Church Ln, Blyton, Gainsborough DN21	Friday 24 th June	11 am – 3 pm
Marston and Gate Burton Village Hall, Trent Port Rd, Marston, Gainsborough DN21 5AR	Saturday 25 th June	12:30 pm-4:30 pm
Willingham Village Hall, High St, Willingham by Stow, Gainsborough DN21 5JZ	Friday 1 st July	10 am – 2 pm
Gringley on-the-Hill Community Centre, W Wells Ln, Gringley on the Hill, Gainsborough DN21 1DQ	Saturday 2 nd July	11 am – 3 pm

[Return to top](#)

12:16 07/02/2023

Welcome to West Burton Solar P x

HOME ABOUT US THE OPPORTUNITY THE PROJECT COTTAM SOLAR PROJECT THE PLANNING PROCESS ENQUIRIES PROJECT TIMELINE

DOCUMENT LIBRARY SITE LAYOUTS DIGITAL VIEWPOINT PHOTOGRAPHY FAQs

Document library

View and download our community consultation documents. This library will be updated as the proposals develop and throughout the consultation process. The material presented at our phase one information events is available here to view and download.

Phase One

- [Phase one consultation leaflet](#)
- [Phase one feedback form](#)
- [Phase one consultation advert](#)
- [Phase one site area and cable route search corridor maps](#)
- [Phase one information event boards](#)
- [Phase one information event maps 1-4](#)
- [Phase one information event maps 5-8](#)
- [Phase one information event maps 9-13](#)
- [Cottam and West Burton Webinar Summary FAQ's – 30/11/2021](#)
- [Phase One Consultation Summary Report April 2022](#)

[Return to top](#)

12:17 07/02/2023

HAVE YOUR SAY


[View all](#)



Phase 2 Consultation
Welcome to our phase two consultation for the Cottam and West Burton Solar Projects



Phase Two Consultation: Cottam and West Burton Solar Projects Map
Cottam and West Burton solar projects interactive map.



Phase One: Interactive Map
This phase of engagement is now closed



[Completed] Phase One: Our Proposals
This phase of engagement is now closed



[Completed] Phase One: Our Consultation
This phase of engagement is now closed

PROJECT TIMELINE

[Learn more](#)





[Home](#) Phase 2 Consultation

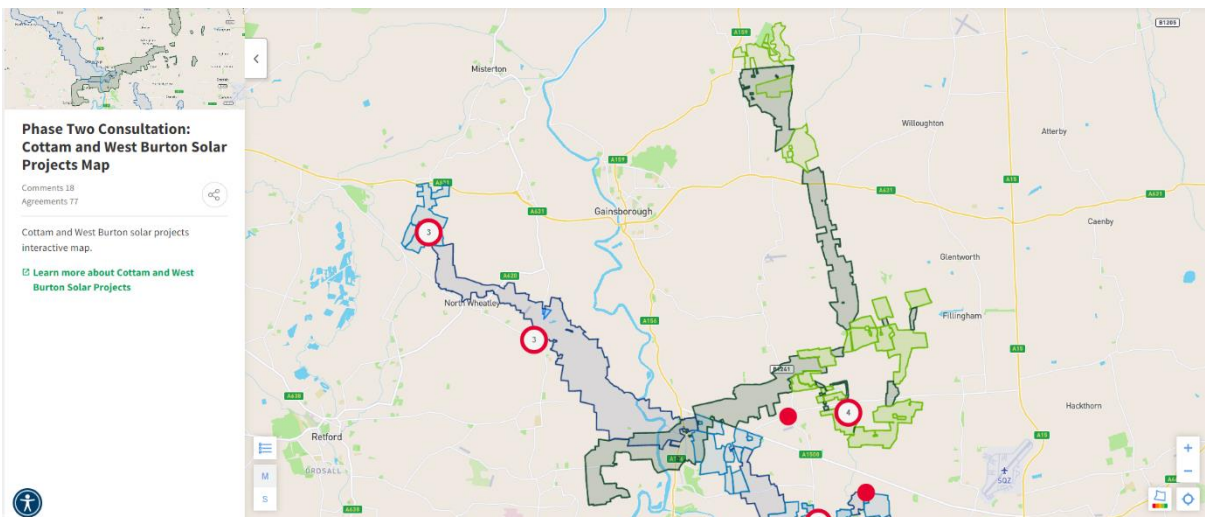
808 responses

1/1

Phase 2 Consultation

Please review the following documents before answering the questions below

- 
[5. Cottam Solar Project_Site Plan.pdf](#) pdf
- 
[5. West Burton Solar Project_Site Location Plan.pdf](#) pdf



Phase Two Consultation: Cottam and West Burton Solar Projects Map
Comments 18
Agreements 77

Cottam and West Burton solar projects interactive map.
[Learn more about Cottam and West Burton Solar Projects](#)

8 Posters Publicising the Consultation Opportunities

Cottam and West Burton Solar Projects Phase two consultation

The phase two consultation for the Cottam and West Burton Solar projects is now live and will run until Wednesday 27 July.

As part of our phase two consultation updated information on the design and layout of the sites is now available. This includes information on the results of our environmental surveys that we have been undertaking as part of the Environmental Impact Assessment (EIA) process.

You can access all of the information above on our dedicated project websites



Alternatively, you can find our consultation leaflet, feedback form and our environmental information at one of our community access points listed below;

- Retford Library (17 Churchgate Retford, DN22 6PE),
- Saxilby Library (St Andrews Centre, William Street, Saxilby, Lincoln, LN1 2LP)
- Scotter Library (Scotter Library, High St, Scotter, Gainsborough, DN21 3RY)
 - Gainsborough Library (Cobden St, Gainsborough, DN21 2NG)
- West Lindsey District Council Office (Guildhall Marshall's Yard, Gainsborough, DN21 2NA)
 - Miserton Library (31 High St, Miserton, Doncaster, DN10 5BU)
 - St Mary's Church (Church Road, Stow, Lincoln, LN1 2DE)

If you have any further questions you can contact the communications team using the details listed below:

West Burton

Email: info@westburtonsolar.co.uk

Phone: 0808 169 1858

Cottam

Email: info@cottamsolar.co.uk

Phone: 0808 169 1848

9 Press Release and Publications Issued to Regional and Trade Media

Press Release:

Updated proposals for the Cottam and West Burton Solar Projects are being shared for further consultation

Island Green Power has launched a second phase of consultation on their proposals for two new solar projects to repower closing East Midlands power stations with renewable energy. The two projects – Cottam Solar Project and West Burton Solar Project – are named after their grid connection points and cross the Lincolnshire and Nottinghamshire county border. Together, they could generate enough clean energy to power up to 324,000 homes.

A second six-week phase of consultation is being held on the updated proposals between Wednesday 15th June and Wednesday 27th July 2022.

As part of the consultation, updated information on the design and layout of the two projects – alongside the results of environmental assessments completed to date – has been published. Island Green Power is asking for feedback on the refined proposals, including the mitigation measures that have been proposed and potential opportunities that could be delivered through the projects.

The teams behind the projects undertook a first phase of consultation on the emerging proposals in November 2021. The feedback received at this stage has been considered through the development of the two projects.

Commenting on the launch of this second phase of consultation, a spokesperson from Island Green Power, said:

'We are really pleased to be sharing our more detailed proposals for the Cottam and West Burton solar projects.

Together, they could play an important role in achieving the UK's commitments to reducing carbon emissions by increasing our supply of clean, affordable and reliable home-grown electricity. However, we recognise that the two projects must be delivered sensitively by considering their surrounding environments and communities.

During our first phase of consultation last year, we heard feedback from local communities on the things they wanted our team to consider when developing the proposals. These comments, alongside our technical work and environmental assessments, have informed the more detailed layouts and plans that we are now able to share.

We look forward to hearing further useful feedback on our updated proposals through this second phase of consultation. These comments will again help us to further refine our proposals ahead of submitting our application later this year. We are grateful to everyone who has taken time so far to engage with us. Anyone with an interest in these projects is encouraged to get in touch and take part in our upcoming consultation.

All of the information relevant to the consultation can be viewed on the dedicated website for each project [\[redacted\]](#) and

[REDACTED] The team are also holding a series of information events at venues across the area and online to discuss the proposals. The details of these events are:

- Wednesday 22nd June (2pm-6pm): Clayworth Memorial Hall Town St, Clayworth, Retford DN22 9AD
- Thursday 23rd June (3:30pm-7:30pm): Saxilby Village Hall 34 High St, Saxilby, Lincoln LN1 2HA
- Friday 24th June (11am-3pm): Blyton Memorial Hall Church Ln, Blyton, Gainsborough DN21 3JZ
- Saturday 25th June (12:30-4:30pm): Marton and Gate Burton Village Hall Trent Port Rd, Marton, Gainsborough DN21 5AR
- Monday 27th June (5pm-6:30pm): Online webinar (contact the team to register)
- Friday 1st July (10am-2pm): Willingham Village Hall High St, Willingham by Stow, Gainsborough DN21 5JZ
- Saturday 2nd July (11am-3pm): Gringley on-the-Hill Community Centre W Wells Ln, Gringley on the Hill, Doncaster DN10 4QY
- Tuesday 12th July (6:30pm-8pm): Online webinar (contact the team to register)

Feedback can be provided online at the project websites, at the information events, by writing to or returning a feedback form to FREEPOST: CAWB Solar Projects, or by emailing (info@cottamsolar.co.uk / info@westburtonsolar.co.uk).

END

Notes to editors

About the developer:

The proposals are being brought forwards by Cottam Solar Project Limited and West Burton Solar Project Limited, both of which are being developed by Island Green Power.

Island Green Power is a leading international developer of renewable energy projects. Established in 2013, they have delivered 26 solar projects worldwide totalling more than 1GW of capacity, including 14 solar projects in the UK and Republic of Ireland. Their mission is to increase solar energy usage, making more renewable energy possible and saving thousands of tonnes of CO₂ in the process.

Island Green Power is committed to responsible land use and believe that the development and delivery of large-scale solar farms can be achieved in harmony with their surroundings.

Project information:

The Cottam Solar Project would generate up to 600 MW of renewable energy and involves a series of three areas of land in the West Lindsey District, in the vicinity of Coates, Corringham, and Blyton.

The West Burton Solar Project would generate up to 480 MW of renewable energy and involves a series of five areas of land. Three of these areas of land are in the West Lindsey District, in the vicinity of Broxholme, Ingleby and Brampton. The fourth area of land for solar generation is in the Bassetlaw District, in the vicinity of Clayworth and Gringley on the Hill. The project also includes a site for a substation situated next to West Burton Power Station to be used for grid connection infrastructure and energy storage.

These areas of land would be connected by underground cable. The projects also include energy storage facilities, making energy available for when it is needed most.

Given the amount of renewable energy these projects would generate, they will be classified as Nationally Significant Infrastructure Projects (NSIPs). This means that, to gain permission to build them, Development Consent Order (DCO) applications will be submitted to the Planning Inspectorate (PINS) after extensive consultation with stakeholders including local communities and District and County Councils. The Secretary of State for Business, Energy and Industrial Strategy (BEIS) will determine whether to grant consent for the proposals.

If consented, it is anticipated that construction on the projects could start from 2024 onwards.

Project contact details:

Any interested parties can get in touch with the project team by email or phone.

Cottam Solar Project [REDACTED] / info@cottamsolar.co.uk /
08081691848 / FREEPOST: CAWB Solar Projects

West Burton Solar Project [REDACTED]
info@westburtonsolar.co.uk / 08081691858 / FREEPOST: CAWB Solar Projects



Media Contacts

Tom Mothersole (Counter Context) [REDACTED] [\[REDACTED\]@countercontext.com/](mailto:[REDACTED]@countercontext.com/)



10 Phase Two Consultation Summary Report

Cottam Solar Project and West Burton Solar Project

Phase Two Consultation Summary Report
September 2022



Introduction

Cottam Solar Project Limited and West Burton Solar Project Limited are developing proposals for new solar and energy storage projects that would cross the county border between Lincolnshire and Nottinghamshire.

Our phase two statutory consultation on these proposals opened on 15 June 2022, and initially ran for 6 weeks until 27 July 2022. During this time, new results from further soil sampling became available (specific to the West Burton 4 site) and an extension was provided to accept feedback on this topic up to 23 August 2022.

We would like to thank the hundreds of local residents who took the time to provide us with feedback during this phase of consultation. The feedback we received is helping to inform the refinement of our proposals.

While this work is ongoing, we wanted to share some of the results from our consultation, including a number of key design updates that these are informing. These updates include:

- West Burton 4 will now be removed from the proposals in its entirety. To read further about this change, please see page 9 of this leaflet.
- Due to the removal of West Burton 4, the proposed West Burton substation site will also be removed. This infrastructure can now be accommodated within West Burton 3. To read further about this change, please see page 9 of this leaflet.
- The 'green lane' off Ingham Road will no longer be used for construction vehicles to access Cottam 1. To read further about this change, please see page 10 of this leaflet.
- Approximately 2.5 acres of land has been identified within the southwest area of West Burton 2 for landscaping and biodiversity mitigation and enhancement measures which we are designing in collaboration with Saxilby Nature Project. To read further about this update, please see page 10 of this leaflet.

Our phase two Consultation

During our phase two consultation we received:



Close to **700** pieces of feedback



Close to **300** attendees to our information events



Over **1,600** visits to our digital engagement platform

We undertook our Consultation by:



Publishing Preliminary Environmental Information Reports (PEIRs) for each project



Distributing community consultation leaflets and feedback forms to over **9,000 addresses** in the vicinity of our proposals



Advertising our consultation, including by publishing statutory notices in local and national newspapers and issuing posters to local venues



Publishing information on our dedicated project websites and inviting comments online through our **digital engagement** platform

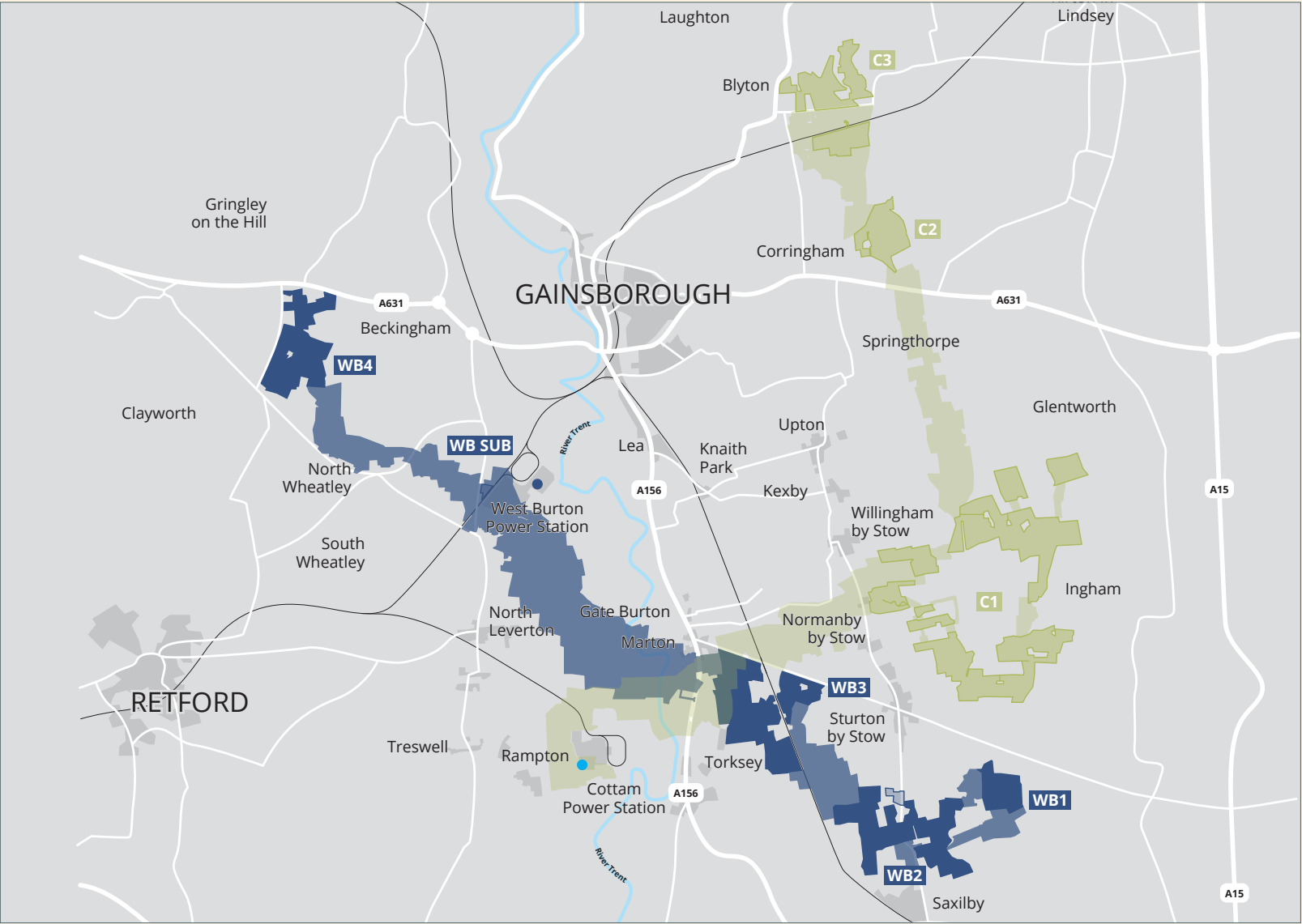


Holding two **community webinar** events



Holding **six in-person community information events** across our consultation area

Site Locations



- Island Green Power:**
- Cottam Solar Project
 - Cottam Solar Project connection corridors
 - West Burton Solar Project
 - West Burton Solar Project connection corridors

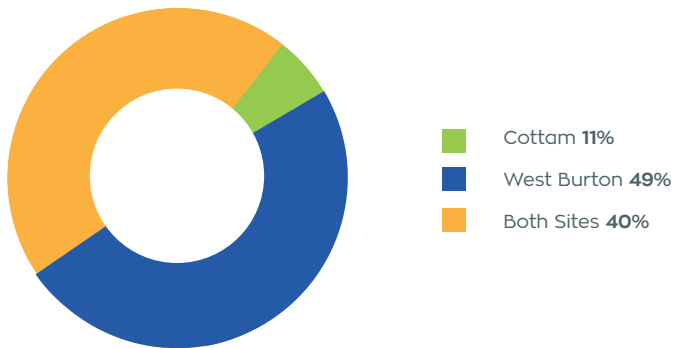
Cottam and West Burton site areas and cable route search corridors, as presented at our phase two consultation.

Consultation feedback:

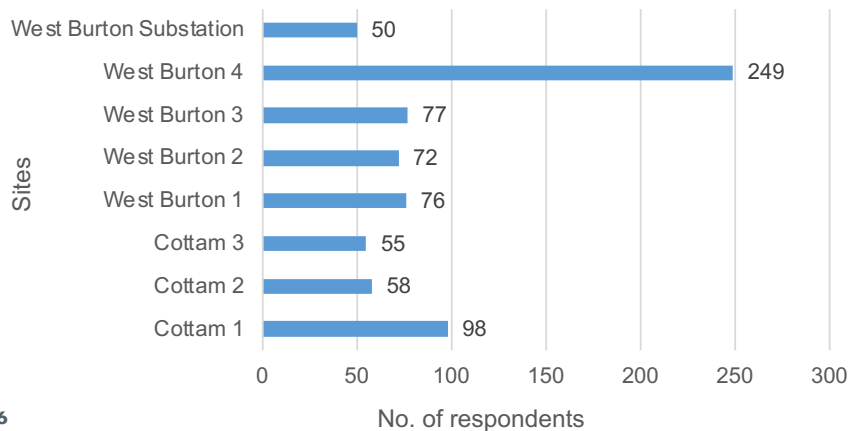
Project-wide statistics

We asked multiple-choice questions as part of our phase two consultation through our feedback form (via a paper copy and online). The response to these questions provides a high-level indication of the feedback received.

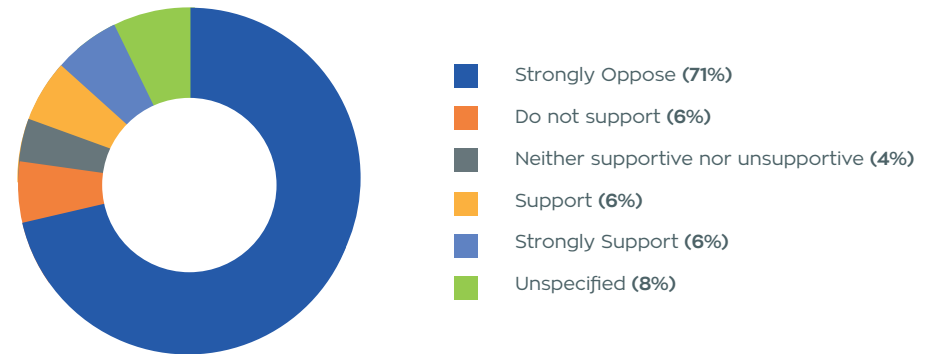
Are you providing your feedback on only one of the solar projects, or both?



We have shared with you our detailed designs for the site layout at all of the 8 sites we have proposed, do you have specific comments on our design for any of the sites?



Based on the information presented as part of our phase two consultation, how supportive are you of our emerging solar project proposals, which would generate clean, affordable, and reliable renewable energy for the national grid, with energy storage for when it is needed most?



We recognise that a clear majority of respondents indicated opposition to the proposals. We also recognise that this question aggregates all responses across the Cottam and West Burton Solar Project and that levels of opposition and support differ across site areas.

For example, over 60% of respondents who selected 'Strongly oppose' or 'Do not support' also indicated that their feedback was relevant to the West Burton 4 site.

By considering location-specific feedback, our team is working to identify refinements that can be made across the projects, including in response to key issues at each site area.

Some of these key themes and updates are presented in the following pages.

Key feedback themes

What you told us	How we're listening
<p>Land quality and use</p> <p>There are concerns regarding the use of agricultural land, in particular land considered to be Best and Most Versatile (BMV). We understand there are concerns regarding food security.</p>	<p>We recognise the need to achieve a balance between food security and energy security. Much of this feedback focused on the West Burton 4 site area, which has now been removed from the proposals. Our final Environmental Statement will set out our site selection process and how we have considered and mitigated the impact to agricultural land.</p>
<p>Landscape and views</p> <p>There are concerns regarding the potential visual impact of the proposals.</p>	<p>The feedback received is informing the development and location of further visual mitigation measures, such as through planting and landscaping. This will be demonstrated by photomontages presented in our application.</p>
<p>Local ecology and biodiversity</p> <p>There are concerns regarding the potential impact to local wildlife.</p>	<p>Our team is developing ecological mitigation measures across the site areas, and we are committed to delivering a netgain in biodiversity. Feedback received on specific species and areas has been taken into account to ensure our assessments and mitigation measures are robust. These will be presented in our Environmental Statement.</p>
<p>Traffic, Access and Construction</p> <p>There are concerns regarding the suitability of local roads for use during construction.</p>	<p>We are reviewing the proposed routes for construction vehicles, including working with other developers to manage the impact of cumulative traffic during construction. An updated Outline Construction Traffic Management Plan is being prepared as part of the application and will consider the feedback received.</p>

Key design updates

While the work to refine our proposals is still ongoing, we can confirm a number of design updates following the close of our phase two consultation.

West Burton 4 – Removal of the site area

West Burton 4 and the associated cabling infrastructure will be removed from the project in its entirety.

We have reached this decision through considering the extensive consultation feedback we have received alongside a range of factors as part of our ongoing design refinement process. These factors include the advancement of the technical design for the solar project and the results from a range of environmental assessments.

On balance, we have concluded that the West Burton Solar Project can be delivered without West Burton 4, and the removal of this site presents opportunities to improve the overall project

West Burton Substation – Removal of the site

The West Burton Substation site area will also be removed from the project. This is due to the removal of the West Burton 4 site changing the requirements for the substation infrastructure in this location. Our team is now exploring how best to incorporate the energy storage and electrical infrastructure within the already identified West Burton 3 site area.

Cottam 1 – Vehicle access to the site

The feedback we received indicated significant concern with the proposed use of the 'green lane' (off Ingham Road) by construction vehicles for accessing the Cottam 1 site area.

In response to this, we have amended our plans and will not be using the green lane as a construction access route to the site. Instead, we are proposing to use a field to the east of the 'green lane', as seen below.



West Burton 2 – Working with Saxilby Nature Project

We have been consulting with Saxilby Nature Project on their use of Hardwick Scrub and their wider aspirations in this area.

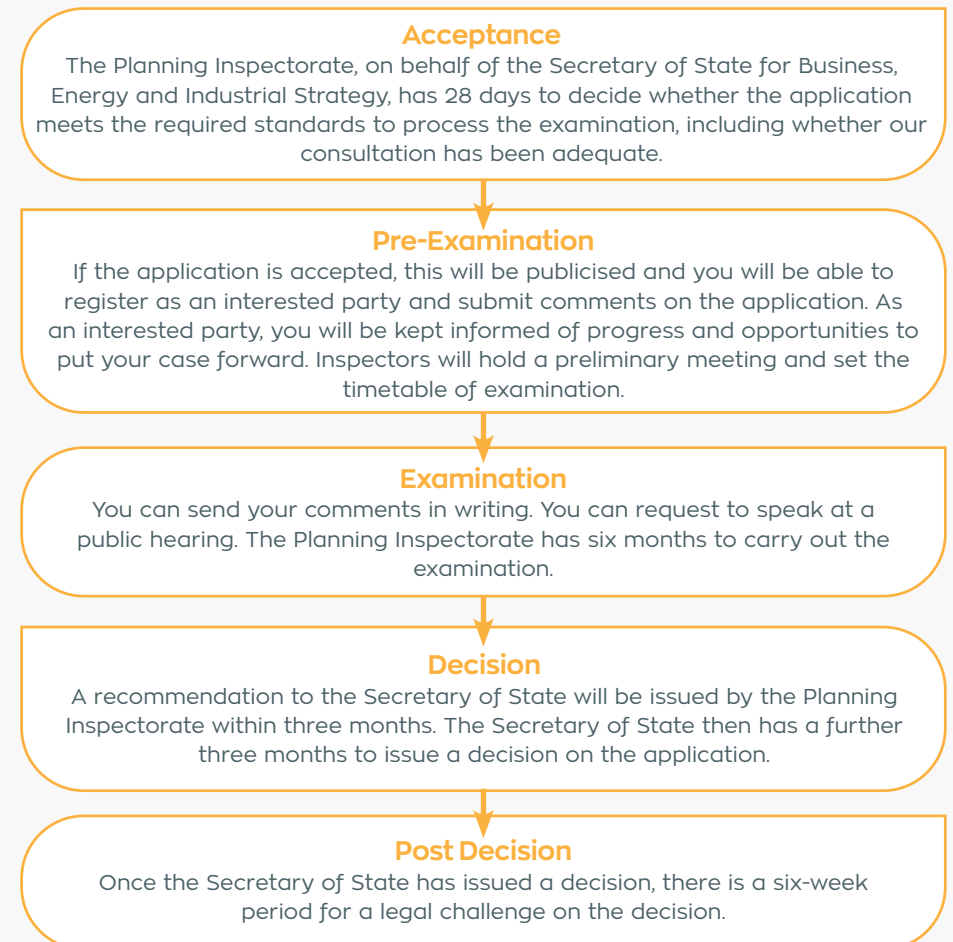
In addition to the permissive path already proposed through the site area, we have worked with Saxilby Nature Project to identify an area of around 2.5 acres in the south-western part of West Burton 2, opposite Hardwick Scrub. Instead of hosting solar panels, this area will be used for landscaping and biodiversity mitigation and enhancement measures post construction of West Burton 2. We are exploring ways in which Saxilby Nature Project may be able to use this area in the future for community activities.

As our design work continues, some updates may require further targeted consultation ahead of us submitting our application. In this case, we will be in touch with relevant stakeholders and residents to notify you of this information.

Submitting our application

Having undertaken two rounds of community consultation and an extensive series of environmental assessment, we are refining our proposals as we prepare to submit our Development Consent Order applications (one for the Cottam Solar Project and another for the West Burton Solar Project). We anticipate submitting our applications over the winter.

The graphic below explains the process once we have applied to the Planning Inspectorate.



Get in Touch

Please don't hesitate to get in touch if you would like to find out more information about the Cottam and West Burton Solar Projects.

You can get in touch with members of our communications team using any of our communications channels listed below.

Cottam Solar Project



Visit our website: [REDACTED]



Email: info@cottamsolar.co.uk



Call: 0808 1691848



Write to: FREEPOST: CAWB Solar Projects



West Burton Solar Project



Visit our website: [REDACTED]



Email: info@westburtonsolar.co.uk



Call: 0808 1691858



Write to: FREEPOST: CAWB Solar Projects



If you would like this document in large print, audio or braille formats, please contact us using the details above.

All graphics and maps in this document are for illustrative purposes.